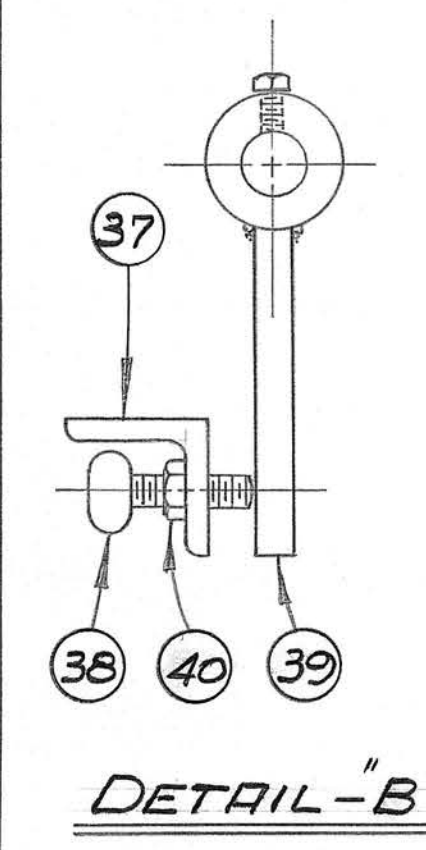


ITEM	REQ'D	PART NO.	DESCRIPTION
1	4	188-076A	Collar
2	1	188-064A	Deflector
3	3	188-081A	Deflector
4	1	188-053A	Inspection Door
5	1	188-084A	Top - Back Section With Hole
6	1	188-085A	Top - Back Section
7	1	188-086A	Deflector
8	1	188-087A	Rain Hood Top
9	2	188-059A	Rain Hood Side
10	1	188-088A	Back of Clipper Air Cleaner
11	2	188-089A	Front and Back - Bottom Section
12	8	188-063A	Transition - 8 x 8 x 6
13	4	188-090A	Transition - 10 x 10 x 6
14	1	188-091A	Collar
15	1	208-002-1A	Counterweight - 1"
16	1	208-002-2A	Counterweight - 5/8"
17	1	188-082A	Weight Rod Assembly
18	1	188-092A	Deflector Gate Assembly
19	1	188-093A	Middle of Clipper Air Cleaner
20	1	188-094A	Filler for Transition
21	2	188-069A	Side of Clipper Air Cleaner
22	1	188-095A	Adjustable Valve Assembly
23	1	188-096A	Front - Middle Section
24	2	188-083A	Filler
25	2	188-097A	Side - Top Section
26	2	188-098A	Side - Front Section
27	4	188-072A	Bearing Collar
28	2	188-067A	Adjusting Lever Spacer
29	3	188-065A	Deflector Valve Collar
30	1	188-099A	Valve Shaft - 42-1/4 Lg.
31	1	188-100A	Valve Shaft - 39-3/4 Lg.
32	2	188-101A	Top - Front Section
33			
34	2	188-102A	Side - Bottom Section
35	1	10-009A	Adjusting Lever
36	1	188-073A	Control Plate
37	1	188-077A	Deflector Valve Stop Angle
38	1	834-30003	5/16"-18 x 1" Lg. Thumb Screw
39	1	188-066A	Deflector Stop Assembly
40	1	826-10516	5/16"-18 Hex Hd. Nut
41	6	826-00010	1/4"-20 Hex Hd. Nut
42	10	834-55601	5/16" x 1/2" Self Tapping Screw



**NOTE -**  
 FAN - RD18  
 CFM - 2775  
 COLLECTOR - 48-10

**MICROFILMED**  
 DATE AUG 24 1980

**CHECKED**  
 By Q Date 10/17/80

SYM.	REVISION	DATE	DR.						
	NPR F00100	1-3-84							

<b>CLIPPER AIR CLEANER</b>		<b>FERRELL - ROSS</b>	MACH. NO.
<b>VERTICAL # 36</b>		SAGINAW, MICH.	
DWN. BY <u>Q</u>	SCALE <u>1/4" = 1"</u>	DATE <u>10/10/80</u>	DWG. NO. <u>001-14261 C</u>