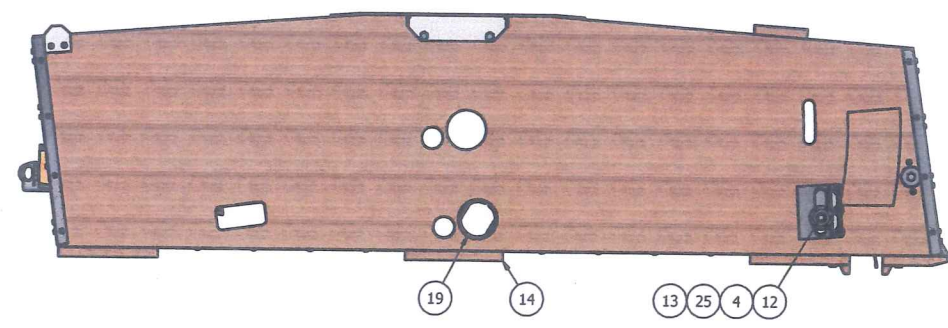
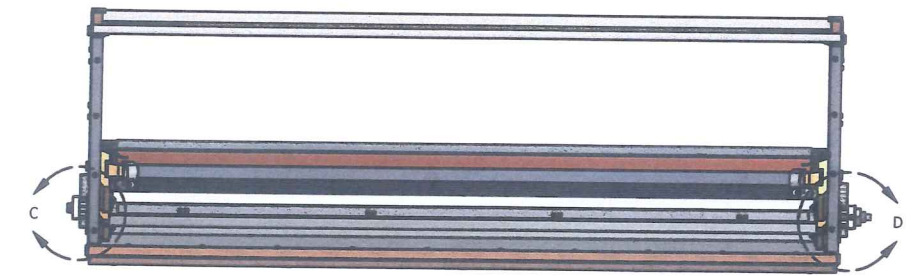
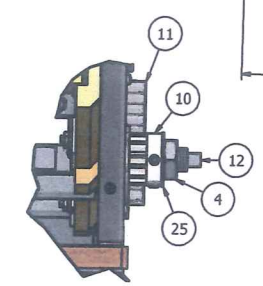
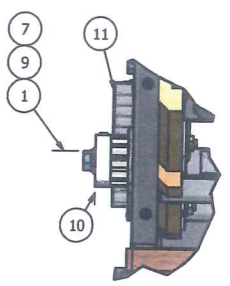
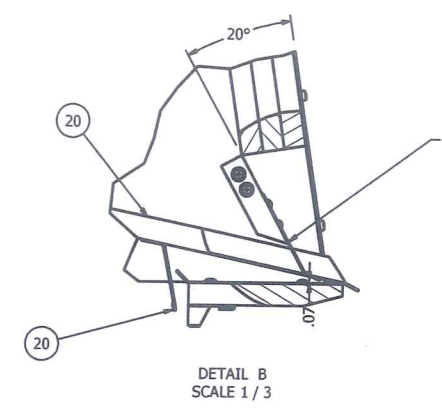
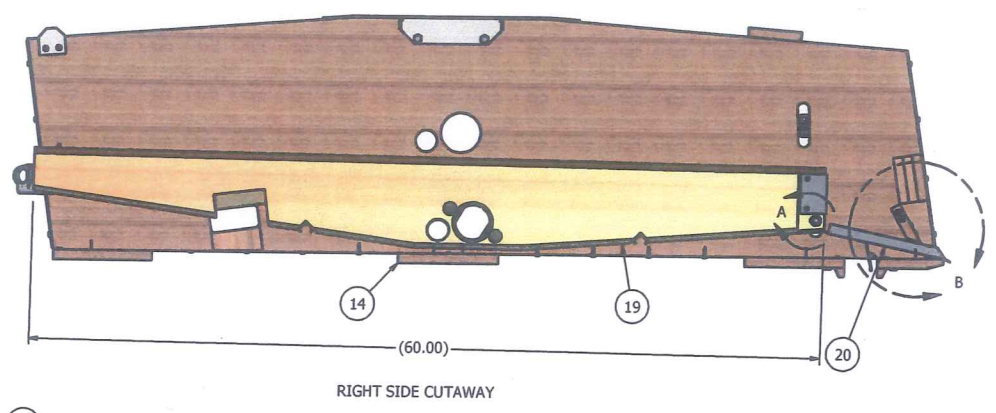
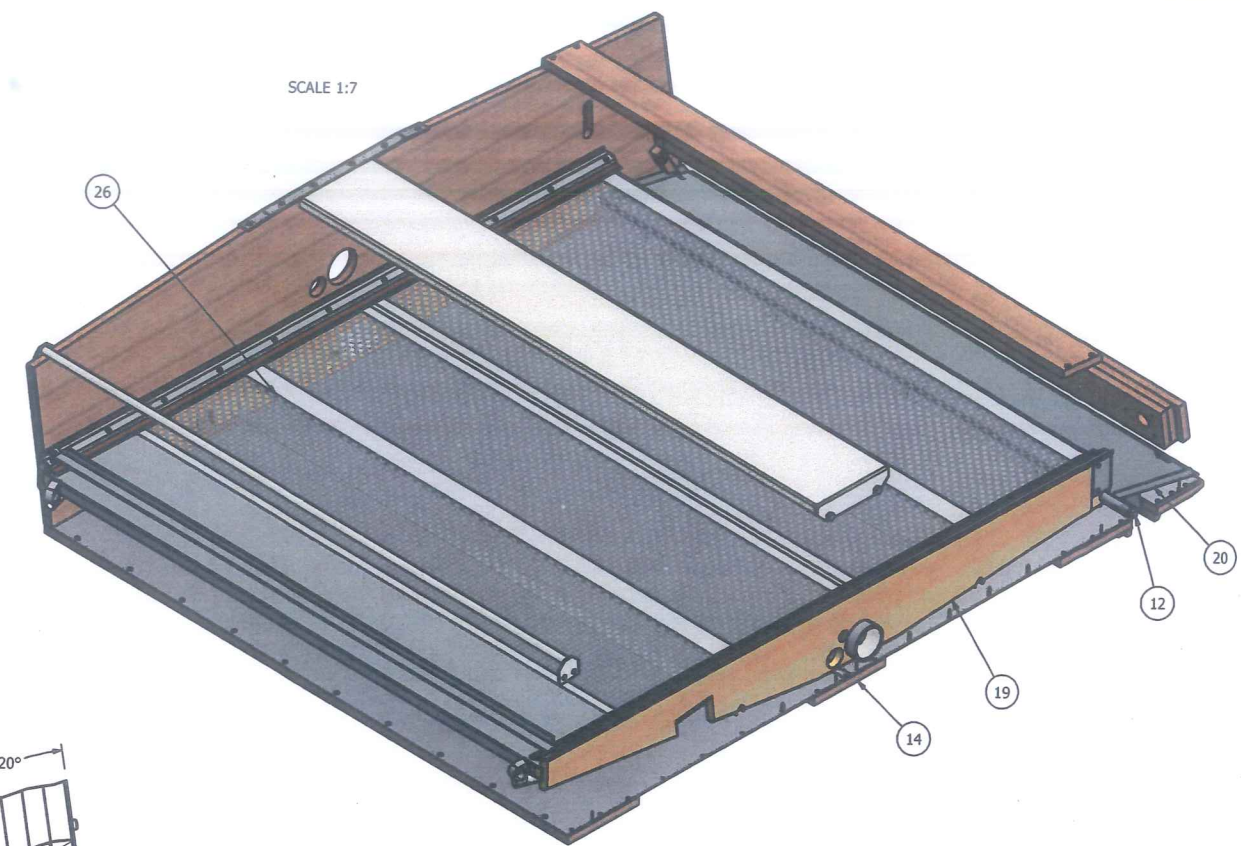
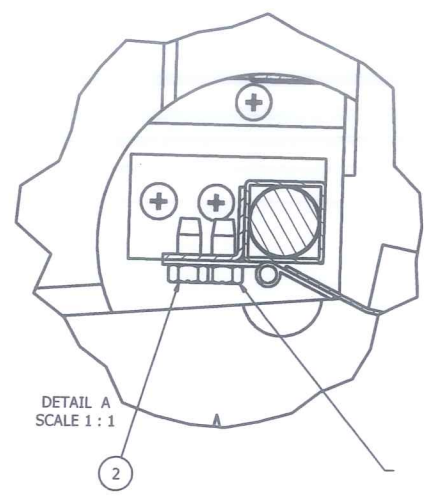
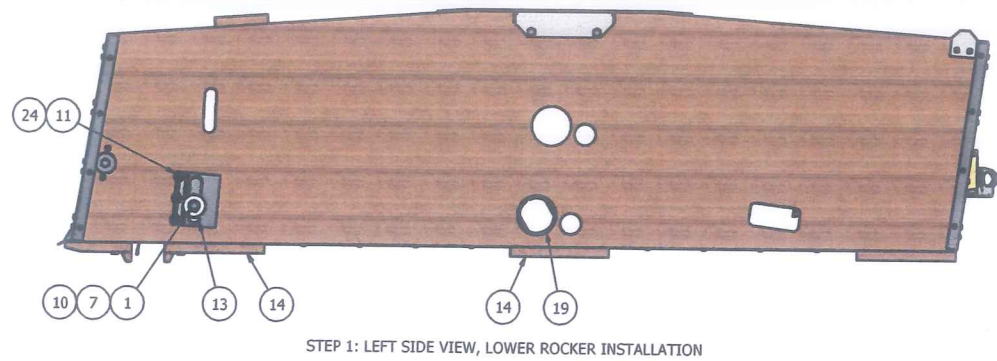


REV	ECN	REVISION HISTORY	DATE	APPROVED
A	F130043	DESCRIPTION RELEASE	4/4/2013	jlmoss



* 26	SALES ORDER	2	FRAME ASSY, PERF SCREEN, 60" X #8
25	F84621034	2	WASHER, FLT .750 X 1.750 X .062
24	F83450101	12	SMS, PAN X HD, #8 X 1"
23	F82071401	2	STUD, DOWEL 1/4-20 X 2.50"
* 22	F08302601	1	SPOUT, SAND RH, 298D
* 21	F08302101	1	SPOUT, STRAW RH, 298D
20	F03500500	1	APRON WLDMT, BOTTOM ROCKER, 298D
19	F03500310	1	ROCKER ASSY, BOTTOM, BOTTOM SHOE, 298D
18	F03500210	1	ROCKER ASSY, TOP, BOTTOM SHOE, 298D
17	F03401700	1	APRON ASSY, 1.25 X 57.5", SEED #8
16	F03000276	1	APRON SPRING ASSY-RH
15	F03000275	1	APRON SPRING ASSY-LH
14	F03000104	1	SHOE ASSY, BOTTOM RH, 298D
13	F01801700	4	PLATE, ESCUTHCHEON, TILT ROD ROCKER
12	F01608303	2	SHAFT, TILTING ROD, 3/4 X 60.50" #8
11	F01200300	4	RACK, STRAIGHT ROCKER ADJUSTING
10	F01200203	4	PINION, BRUSH ADJ. 13 TOOTH W/SET SCREWS
9	66444400	2	WASHER, LOCK HELICAL 3/8"
8	66443300	2	WASHER, LOCK HELICAL 1/4"
7	66404400	2	WASHER, FLAT 3/8" NARROW TYPE A
6	66403300	2	WASHER, FLAT 1/4"
5	66363300	2	NUT, WING 1/4-20 TYPE B STYLE 1
4	66276400	2	NUT, HEAVY HEX JAM 3/4-10
3	65852226	4	SMS, FLT X HD #8 X 1.25"
2	65483312	8	SCW, MACH HX SLT HD T/C 1/4-20 X 1/2"
1	62584422	2	HHCS, 3/8-16 X 1.00"

This drawing is the property of the A.T. Ferrell Company, Inc and must be returned immediately upon request. No part of this drawing may be reproduced, stored in a retrieval system or transmitted in any form or by any means, without prior written consent of the A.T. Ferrell Company, Inc

CAD
NO MANUAL CHANGES
TOLERANCES EXCEPT AS NOTED

DECIMAL: .005
FRACTIONAL: 1/32

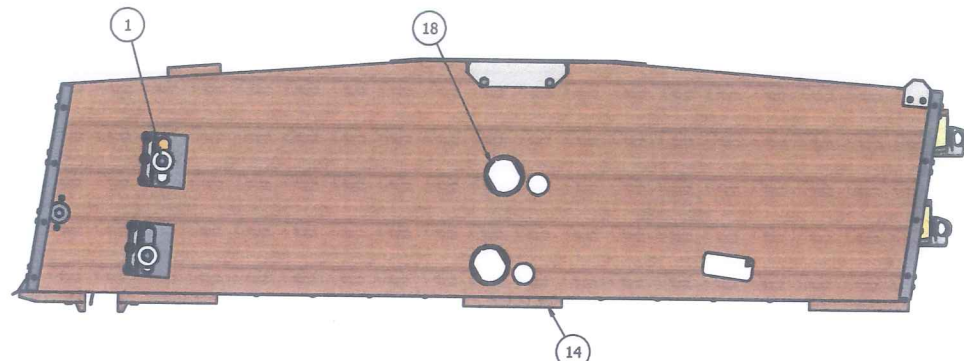
FINISH: 1:7
SCALE: 1:7
DRAWN BY: jlmoss
APPROVED BY: DMJ

DIVISION OF A. T. FERRELL COMPANY
BLUFFTON, INDIANA - USA

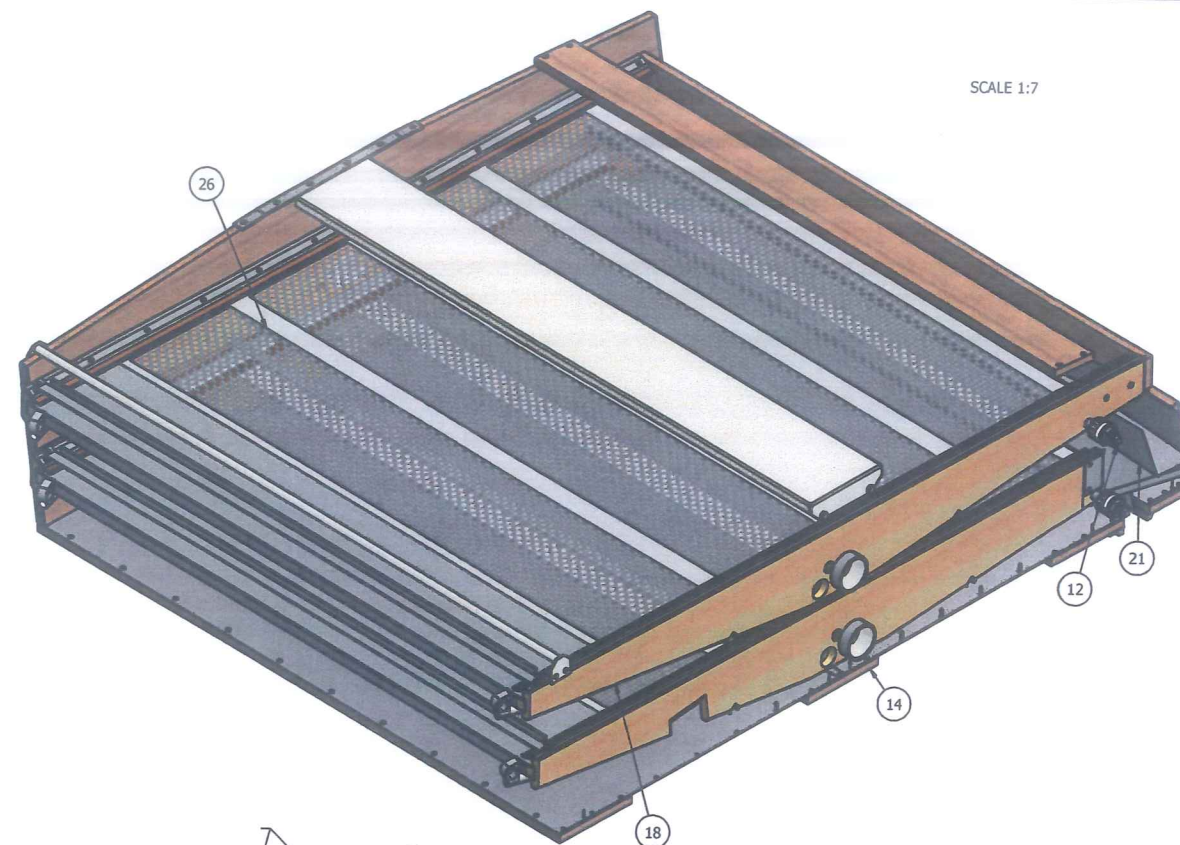
TITLE: BTM SHOE ASSY W/RCKRS RH 298D
DATE: 3/28/2013
SIZE: D
PART NUMBER: F03000108
SHEET: 1 of 3

1. DO NOT SCALE FROM DRAWING.

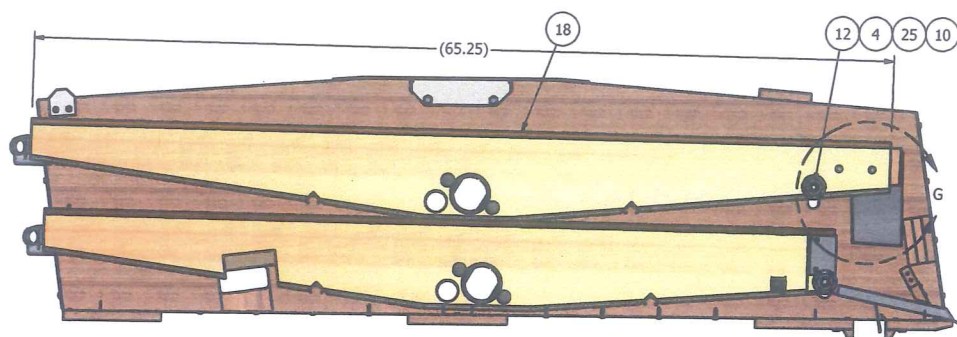
REV	ECN	REVISION HISTORY	DATE	APPROVED
A	F130043	DESCRIPTION RELEASE	4/4/2013	jlmoss



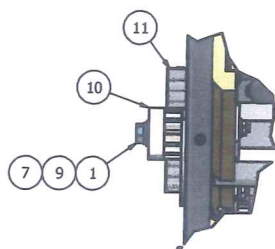
STEP 2: LEFT SIDE VIEW, UPPER ROCKER INSTALLATION



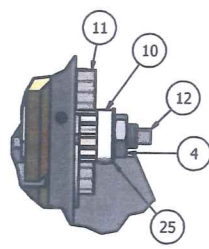
SCALE 1:7



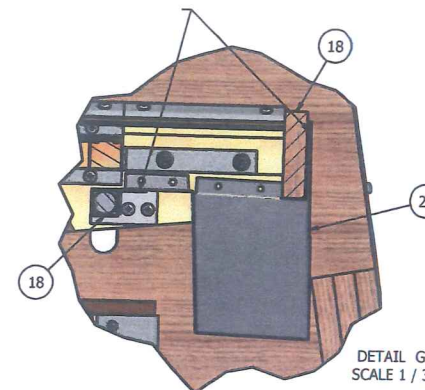
RIGHT SIDE CUTAWAY



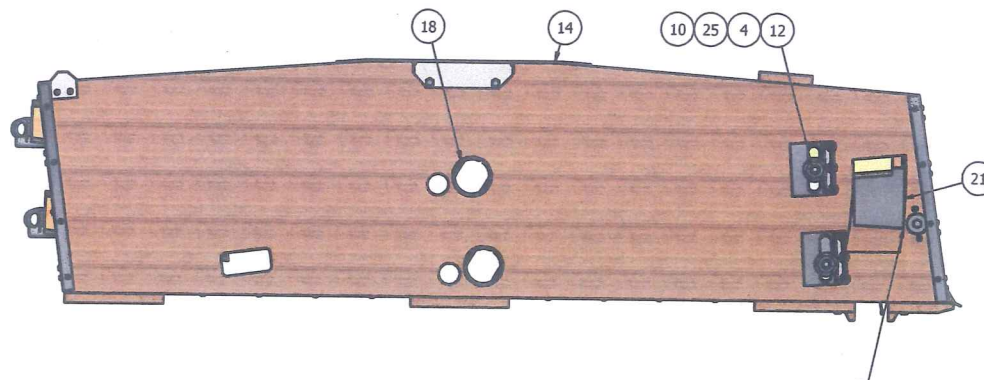
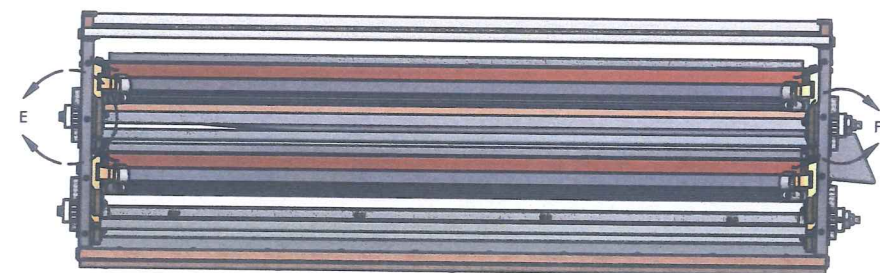
DETAIL E
SCALE 1 / 3



DETAIL F
SCALE 1 / 3



DETAIL G
SCALE 1 / 3



STEP 2: RIGHT SIDE VIEW, UPPER ROCKER INSTALLATION

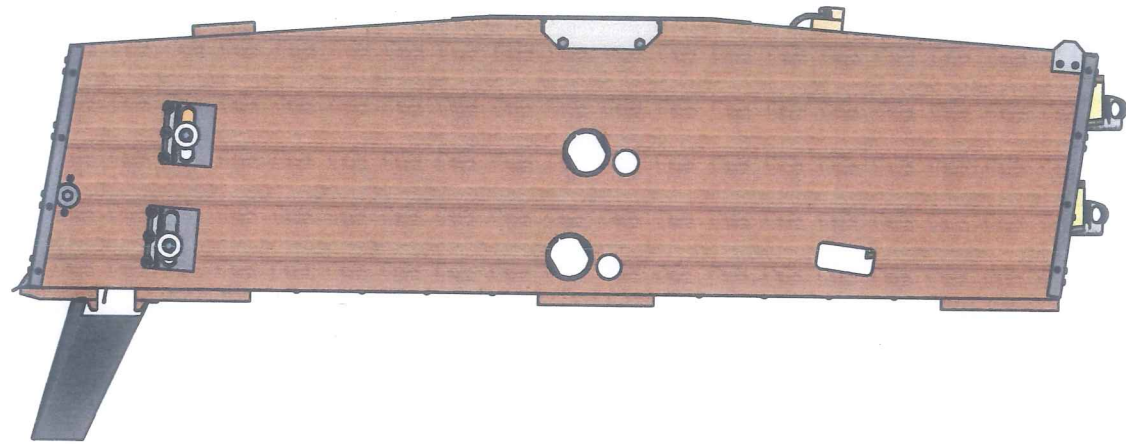
* 26	SALES ORDER	2	FRAME ASSY, PERF SCREEN, 60" X #8
25	F84621034	2	WASHER, FLT .750 X 1.750 X .062
24	F83450101	12	SMS, PAN X HD, #8 X 1"
23	F82071401	2	STUD, DOWEL 1/4-20 X 2.50"
* 22	F08302601	1	SPOUT, STRAW RH, 298D
* 21	F08302101	1	SPOUT, SAND RH, 298D
20	F03500500	1	APRON WLDMT, BOTTOM ROCKER, 298D
19	F03500310	1	ROCKER ASSY, BOTTOM, BOTTOM SHOE, 298D
18	F03500210	1	ROCKER ASSY, TOP, BOTTOM SHOE, 298D
17	F03401700	1	APRON ASSY, 1.25 X 57.5", SEED #8
16	F03000276	1	APRON SPRING ASSY-RH
15	F03000275	1	APRON SPRING ASSY-LH
14	F03000104	1	SHOE ASSY, BOTTOM RH, 298D
13	F01801700	4	PLATE, ESCUTHCHEON, TILT ROD ROCKER
12	F01608303	2	SHAFT, TILTING ROD, 3/4 X 60.50" #8
11	F01200300	4	RACK, STRAIGHT ROCKER ADJUSTING
10	F01200203	4	PINION, BRUSH ADJ. 13 TOOTH W/SET SCREWS
9	66444400	2	WASHER, LOCK HELICAL 3/8"
8	66443300	2	WASHER, LOCK HELICAL 1/4"
7	66404400	2	WASHER, FLAT 3/8" NARROW TYPE A
6	66403300	2	WASHER, FLAT 1/4"
5	66363300	2	NUT, WING 1/4-20 TYPE B STYLE 1
4	66276400	2	NUT, HEAVY HEX JAM 3/4-10
3	65852226	4	SMS, FLT X HD #8 X 1.25"
2	65483312	8	SCW, MACH HX SLT HD T/C 1/4-20 X 1/2"
1	62584422	2	HHCS, 3/8-16 X 1.00"

This drawing is the property of the A.T. Ferrell Company, Inc and must be returned immediately upon request. No part of this drawing may be reproduced, stored in a retrieval system or transmitted in any form or by any means, without prior written consent of the A.T. Ferrell Company, Inc

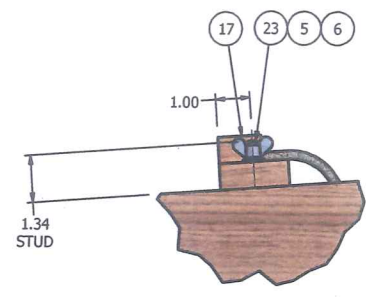
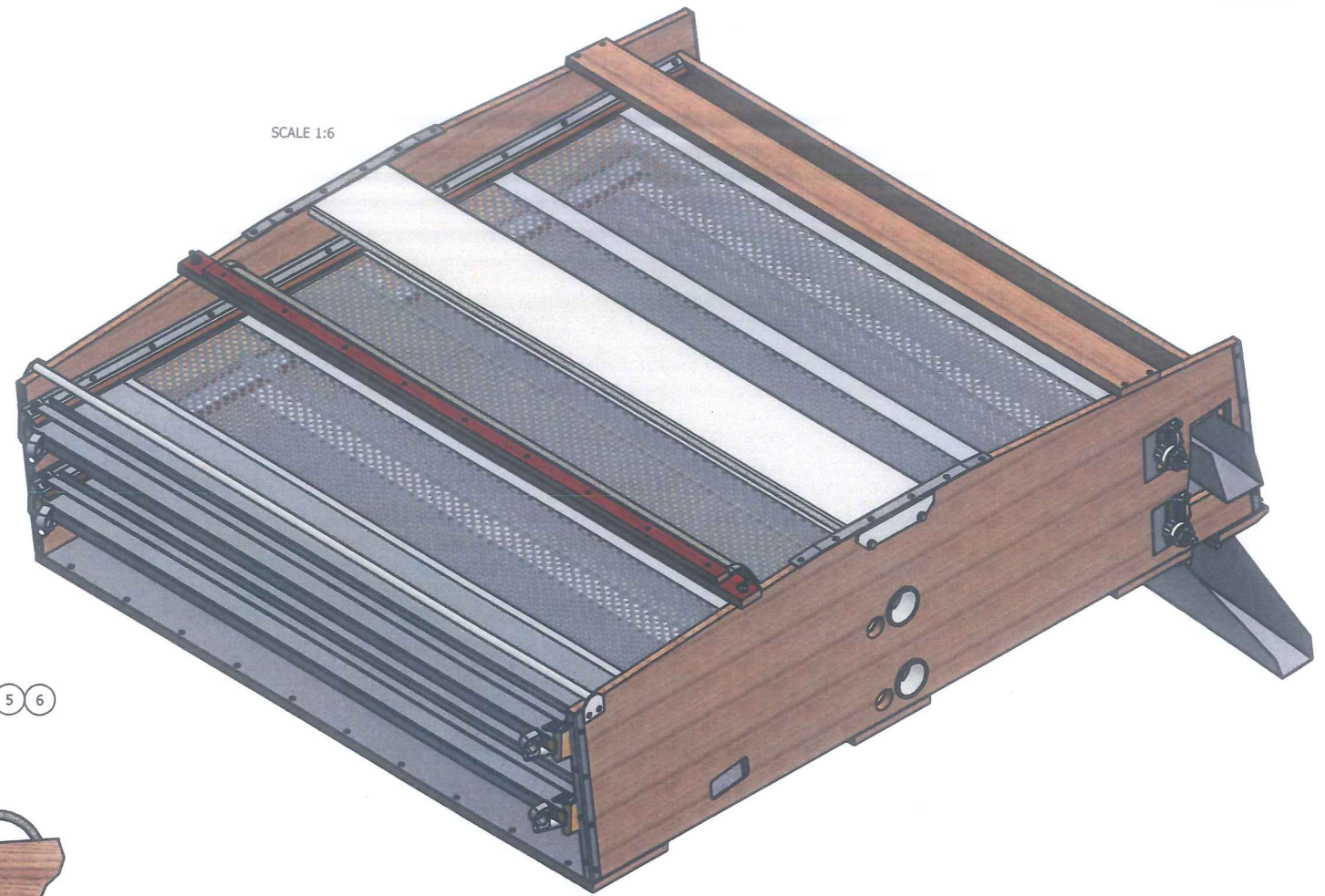
ITEM	PART NUMBER	QTY	DESCRIPTION
CAD NO MANUAL CHANGES TOLERANCES EXCEPT AS NOTED DECIMAL: .xxx ± .005 FRACTIONAL: 1/32 ± .010 ANGULAR: ± 1/32 FINISH:			
DIVISION OF A.T. FERRELL COMPANY		SCALE: 1:7	BLUFFTON, INDIANA, USA
DRAWN BY: jlmoss		APPROVED BY: DMJ	
TITLE: BTM SHOE ASSY W/RCKRS RH 298D			
DATE: 3/28/2013	SIZE: D	PART NUMBER: F03000108	SHEET: 2 of 3

F03000108

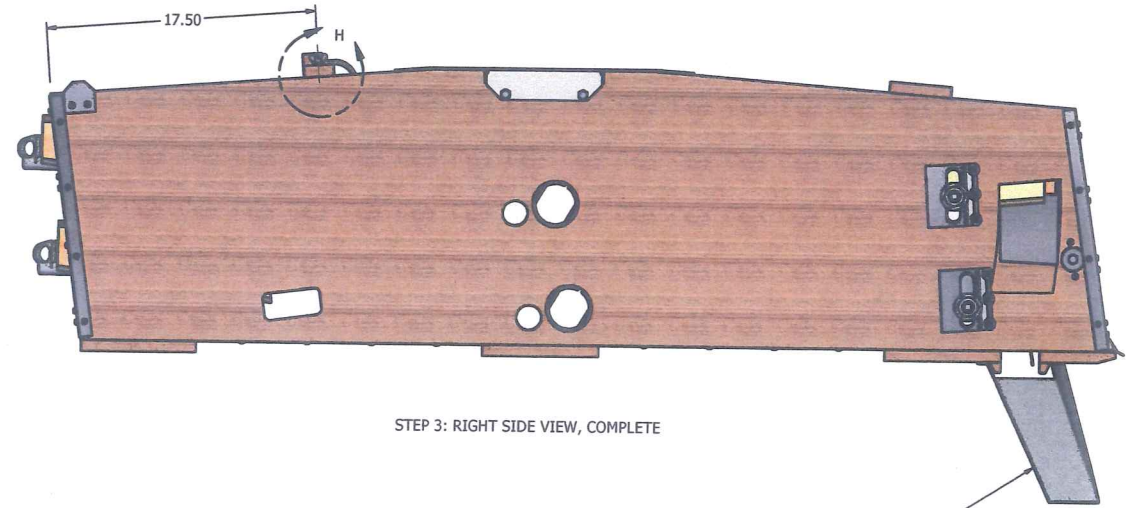
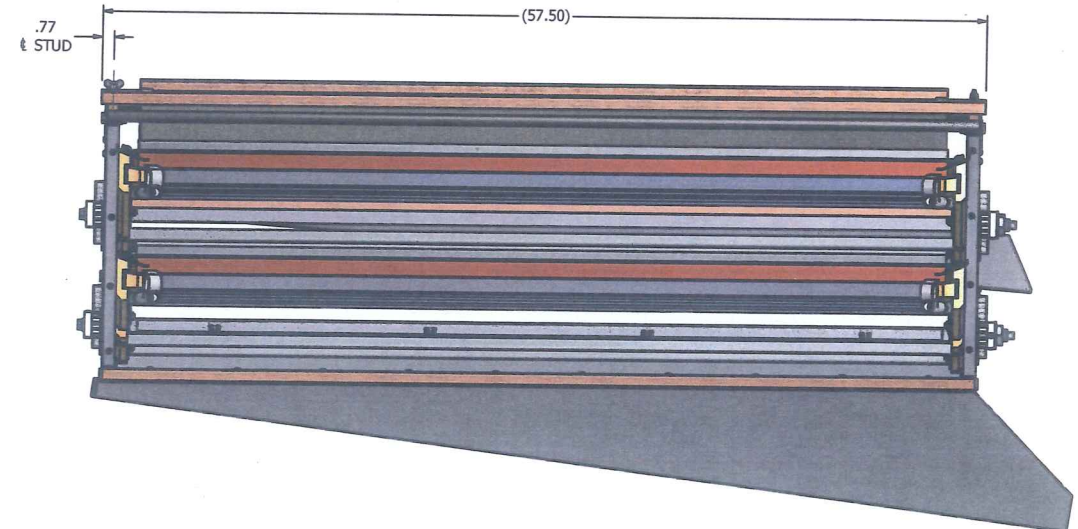
REV	ECN	REVISION HISTORY	DATE	APPROVED
A	F130043	DESCRIPTION RELEASE	4/4/2013	jlmoss



STEP 3: LEFT SIDE VIEW, COMPLETE



DETAIL H
SCALE .38:1



STEP 3: RIGHT SIDE VIEW, COMPLETE

HAND-COMPRESS LEGS TO START AND THEN SLIDE SAND SPOUT ON TO BOTTOM OF SHOE INSIDE TRACKS.

ITEM	PART NUMBER	QTY	DESCRIPTION
* 26	SALES ORDER	2	FRAME ASSY, PERF SCREEN, 60" X #8
25	F84621034	2	WASHER, FLT .750 X 1.750 X .062
24	F83450101	12	SMS, PAN X HD, #8 X 1"
23	F82071401	2	STUD, DOWEL 1/4-20 X 2.50"
* 22	F08302601	1	SPOUT, SAND RH, 298D
* 21	F08302101	1	SPOUT, STRAW RH, 298D
20	F03500500	1	APRON WLDMT, BOTTOM ROCKER, 298D
19	F03500310	1	ROCKER ASSY, BOTTOM, BOTTOM SHOE, 298D
18	F03500210	1	ROCKER ASSY, TOP, BOTTOM SHOE, 298D
17	F03401700	1	APRON ASSY, 1.25 X 57.5", SEED #8
16	F03000276	1	APRON SPRING ASSY-RH
15	F03000275	1	APRON SPRING ASSY-LH
14	F03000104	1	SHOE ASSY, BOTTOM RH, 298D
13	F01801700	4	PLATE, ESCUTHCHEON, TILT ROD ROCKER
12	F01608303	2	SHAFT, TILTING ROD, 3/4 X 60.50" #8
11	F01200300	4	RACK, STRAIGHT ROCKER ADJUSTING
10	F01200203	4	PINION, BRUSH ADJ. 13 TOOTH W/SET SCREWS
9	66444400	2	WASHER, LOCK HELICAL 3/8"
8	66443300	2	WASHER, LOCK HELICAL 1/4"
7	66404400	2	WASHER, FLAT 3/8" NARROW TYPE A
6	66403300	2	WASHER, FLAT 1/4"
5	66363300	2	NUT, WING 1/4-20 TYPE B STYLE 1
4	66276400	2	NUT, HEAVY HEX JAM 3/4-10
3	65852226	4	SMS, FLT X HD #8 X 1.25"
2	65483312	8	SCW, MACH HX SLT HD T/C 1/4-20 X 1/2"
1	62584422	2	HHCS, 3/8-16 X 1.00"

This drawing is the property of the A.T. Ferrell Company, Inc and must be returned immediately upon request. No part of this drawing may be reproduced, stored in a retrieval system or transmitted in any form or by any means, without prior written consent of the A.T. Ferrell Company, Inc

CAD
NO MANUAL CHANGES
TOLERANCES EXCEPT AS NOTED

NOTED

DECIMAL: .005
FRACTIONAL: 1/32
ANGULAR: 1/2

FINISH: 1:7
SCALE: 1:7
DRAWN BY: jlmoss
APPROVED BY: DMJ

DIVISION OF A. T. FERRELL COMPANY
SINCE 1889
BLUFFTON, INDIANA - USA

TITLE: BTM SHOE ASSY W/RCKRS RH 298D
DATE: 3/28/2013
SIZE: D
PART NUMBER: F03000108
SHEET: 3 of 3

NOTES:
1. DO NOT SCALE FROM DRAWING.
2. * LINE ITEM ON SALES ORDER. NOT INCLUDED IN BILL OF MATERIAL.