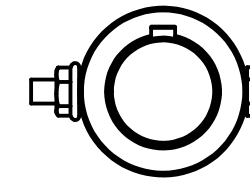
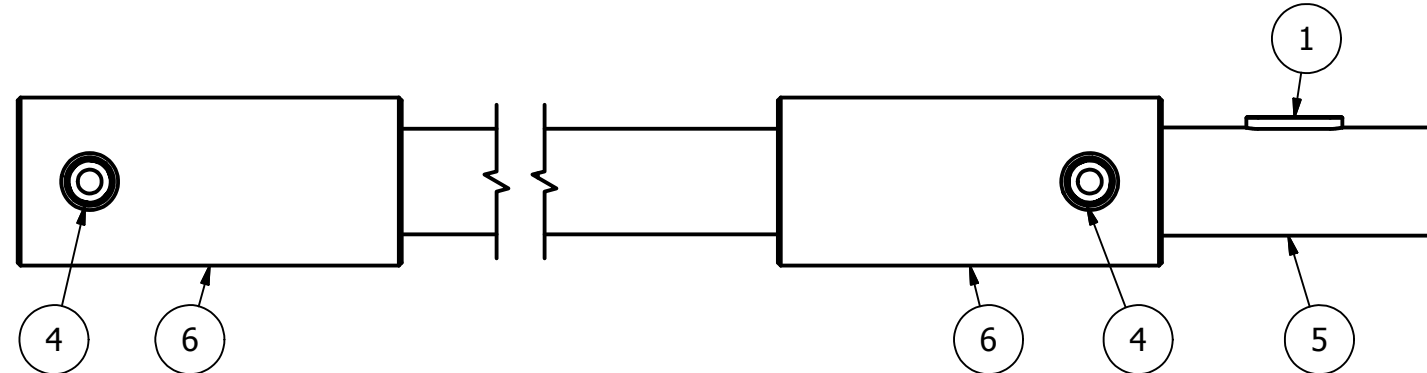
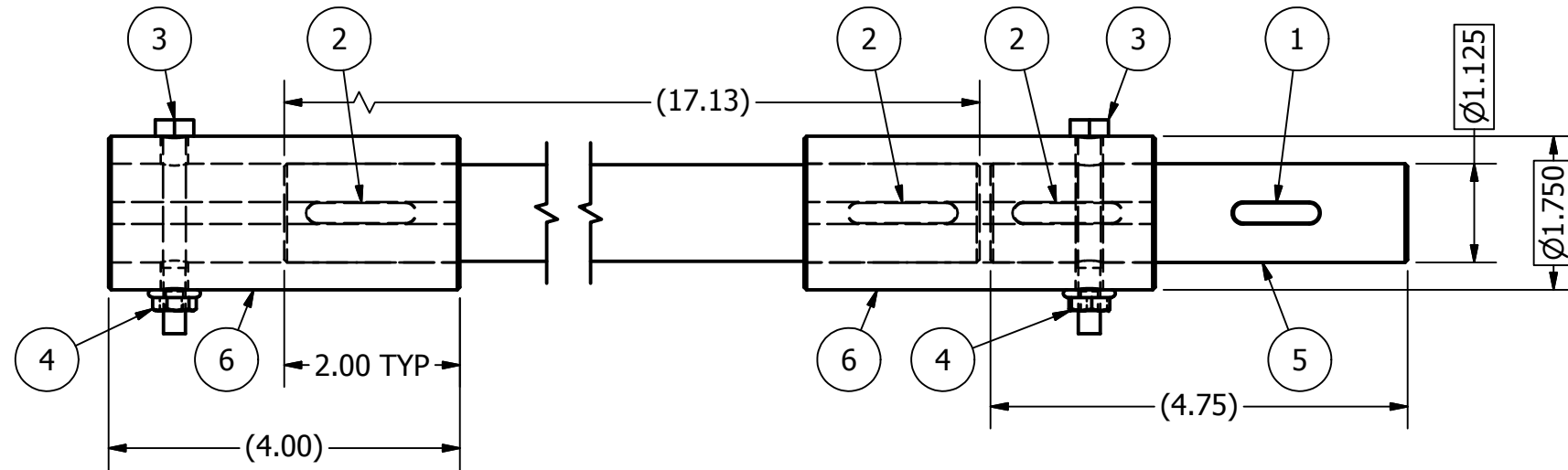
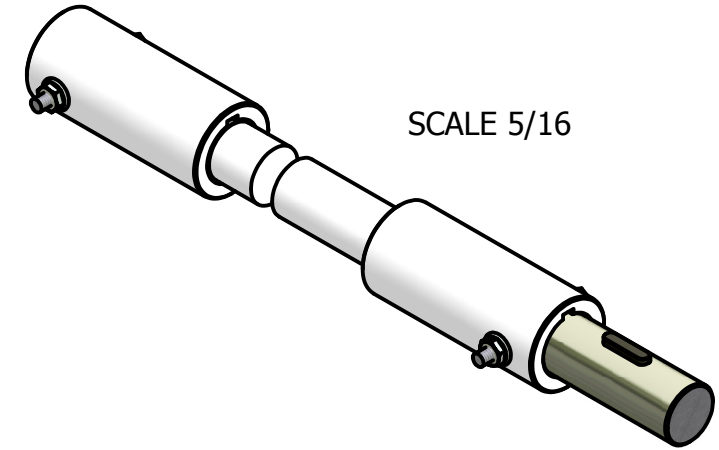


2

1

REVISION HISTORY				
REV	ECN	DESCRIPTION	DATE	APPROVED
A	K950172	RELEASE	2/27/1995	DJ
B	K090063	REDRAWN IN INVENTOR	2/26/2009	pggalea



ITEM	PART NUMBER	QTY	DESCRIPTION
7	K200-01651	1	ROD, CONNECTING, ROLL RLSE 10 X 18"
6	K200-01648	2	COUPLING, ECCENTRIC ROD 10"
5	K200-01647	1	ROD, ROLL RELEASE ECC, SHORT 10""
4	66783300	2	NUT, HEX SERR LOCK 1/4-20
3	62583335	2	HHCS, 1/4-20 X 2.25"
2	49400620	3	KEY, SQUARE, RND END .250 X 1.25"
1	49400616	1	KEY, SQUARE, RND END .250 X 1.00"

- NOTES:
- DO NOT SCALE FROM DRAWING.
 - ONE PIECE REQUIRED PER ROLLER MILL ASSY, SINGLE HI 10 X 18".
 - TWO PIECES REQUIRED PER ROLLER MILL ASSY, 2 HI 10 X 18".
 - RH MILL ASSEMBLY SHOWN, ASSEMBLE CAP SCREWS & LOCK NUTS OPPOSITE FOR LH MILL.

This drawing is the property of the A.T. Ferrell Company, Inc and must be returned immediately upon request. No part of this drawing may be reproduced, stored in a retrieval system or transmitted in any form or by any means, without prior written consent of the A.T. Ferrell Company, Inc

<p>CAD</p> <p>NO MANUAL CHANGES</p> <p>TOLERANCES EXCEPT AS NOTED</p>					
	<p>DIVISION OF A. T. FERRELL COMPANY</p> <p>BLUFFTON, INDIANA - USA</p>				
<p>DECIMAL: xxx ± .005 xx ± .030</p> <p>FRACTIONAL: ± 1/32</p> <p>ANGULAR: ± 1/2~</p>	<p>FINISH: NONE</p>	<p>SCALE: 1:2</p>	<p>DRAWN BY: pggalea</p>	<p>APPROVED BY:</p>	
<p>TITLE: CONNECTING ROD ASSY, 10 X 18"</p>		<p>DATE: 2/26/2009</p>	<p>SIZE: B</p>	<p>PART NUMBER: K100-00168</p>	<p>SHEET: 1 of 1</p>

2

4

1

K100-00168

B

4

A