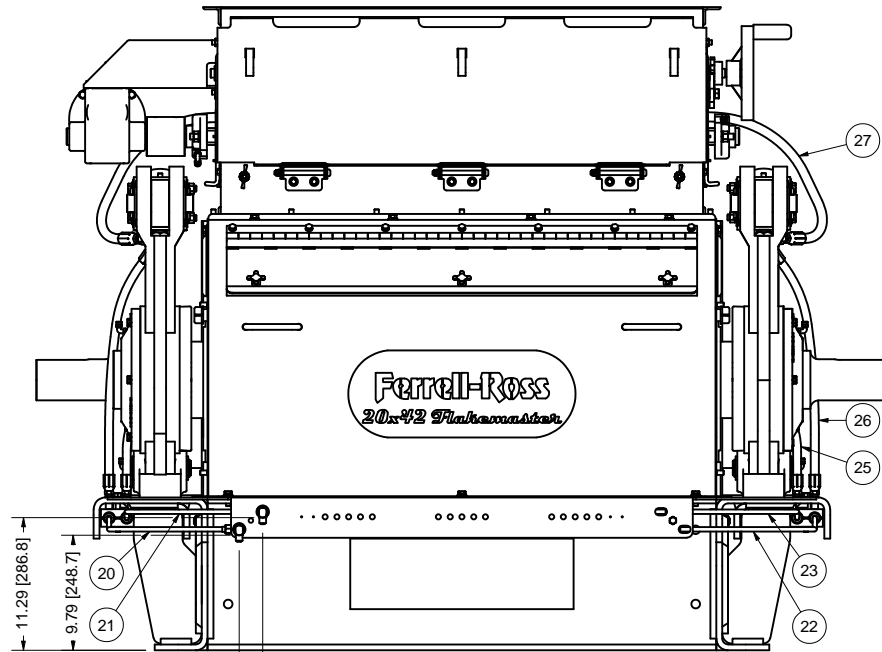
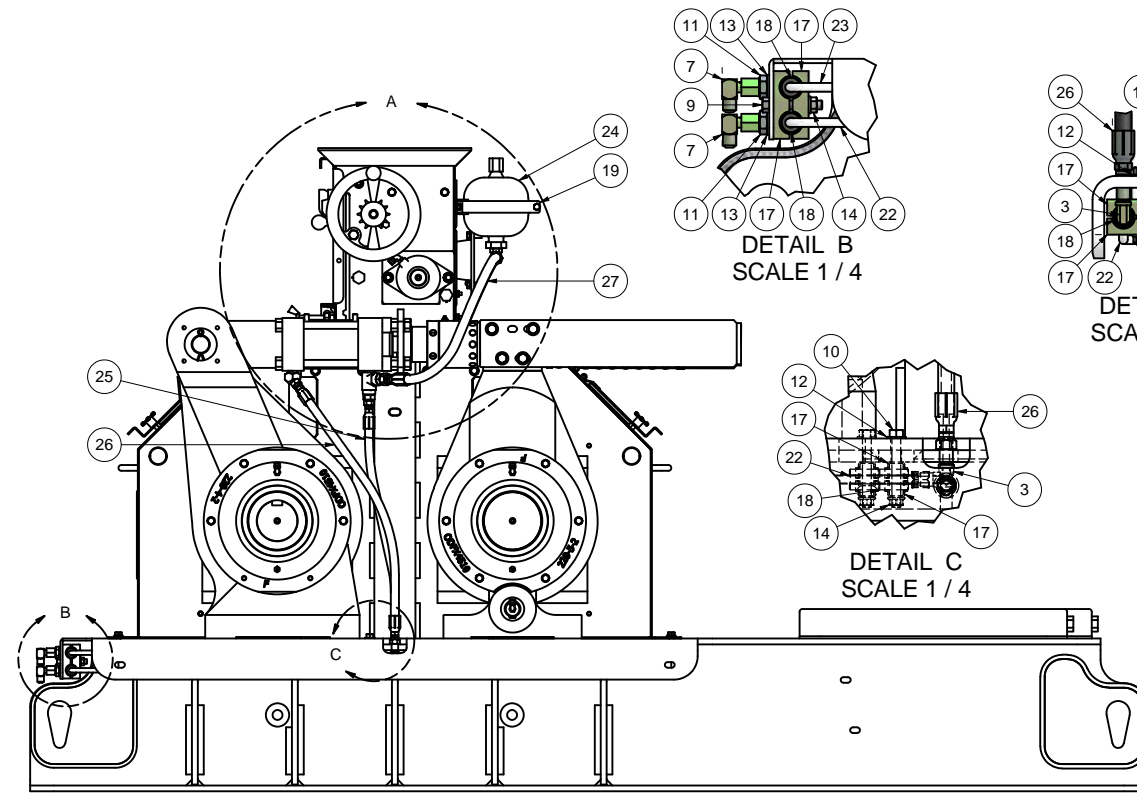


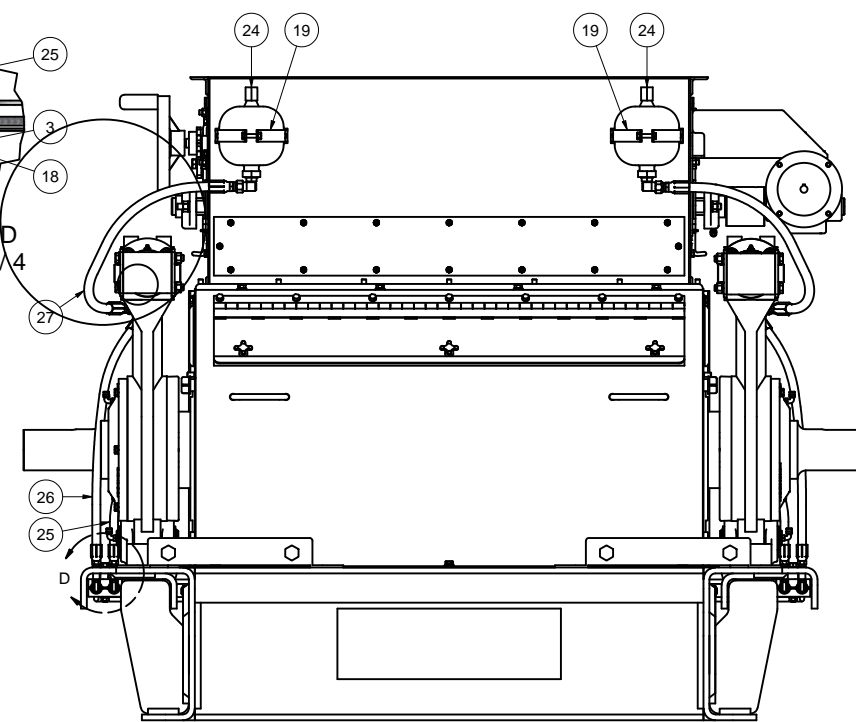
REV	LTR	ZONE	REVISION HISTORY	DATE	APPROVED
A	K040061	1	DESCRIPTION RELEASE	4/25/2005	DMJOHNSON



FRONT



RIGHT SIDE VIEW

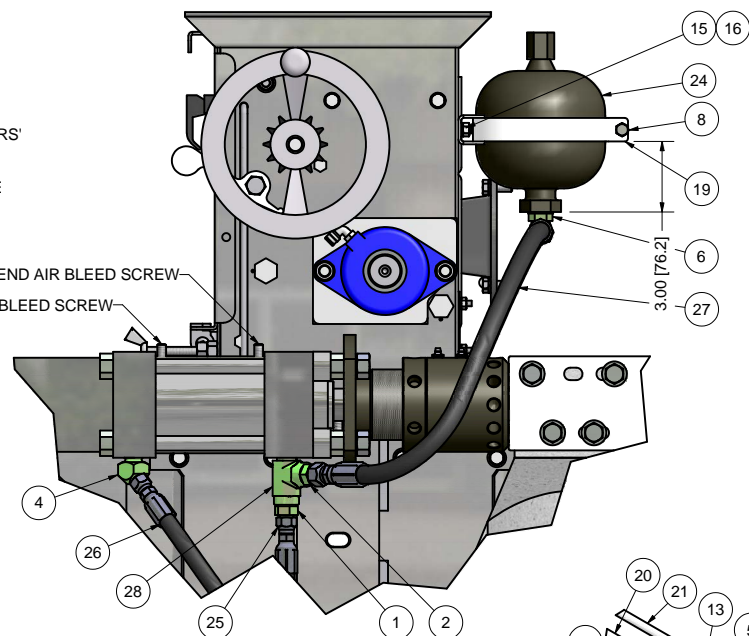


REAR VIEW

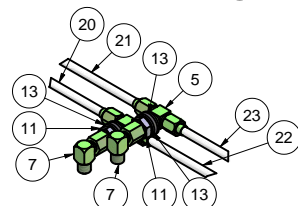
HYDRAULIC SYSTEM AIR BLEED PROCEDURE:

1. CLOSE ROLLS & LOOSEN AIR BLEED SCREW ON HYDRAULIC CYLINDERS' ROD END. DO NOT REMOVE SCREW. LOOSEN ONLY ENOUGH TO BREAK THE SEAL. TIGHTEN BLEED SCREW.
2. OPEN ROLLS & REPEAT #1 FOR HYDRAULIC CYLINDERS' HEAD END AIR BLEED SCREW.
3. REPEAT #1 & 2 UNTIL ALL AIR IS REMOVED FROM THE SYSTEM.

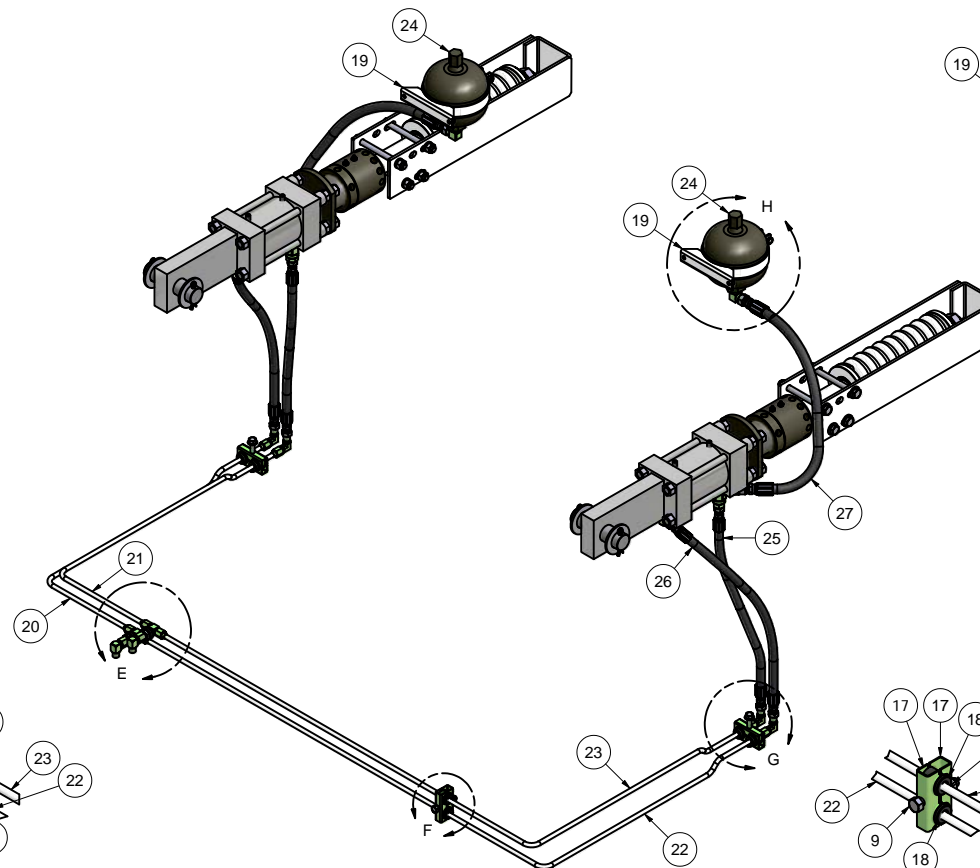
ROD END AIR BLEED SCREW
HEAD END AIR BLEED SCREW



DETAIL A
SCALE 1/4



DETAIL E
SCALE 1/4



DETAIL F
SCALE 1/4

ITEM	PART NUMBER	QTY	DESCRIPTION
28	K909-28801	2	TEE, .50" 5602-8-8-8
27	K909-20551	2	HOSE, HYDRAULIC 6CIT-8FJX 24.00"
26	K909-18901	2	HOSE, HYDRAULIC 6CIT-6FJX 25.00"
25	K909-18701	2	HOSE, HYDRAULIC 6CIT-6FJX 22.00"
24	K909-01701	2	ACC. BLADDER OIL SVC 3K PSI 1 QT 1/2-14 NPT
23	K200-07015	1	TUBING, HYDRAULIC, UPPER LONG, RH 20X42"
22	K200-07014	1	TUBING, HYDRAULIC, RH LOWER, RH 20X42"
21	K200-07013	1	TUBING, HYDRAULIC, UPPER SHORT, RH 20X42"
20	K200-07012	1	TUBING, HYDRAULIC, LH LOWER, RH 20X42"
19	K200-00078	2	BRACKET, ACCUMULATOR 5.50"
18	80000510	6	BSHG, SPLIT RBBR .38 X .88 X 1.25"
17	70001017	6	CLAMP, HYD TBG 1.50" HC-10-2
16	67123800	4	WASHER, LOCK T304 SS 5/16"
15	67063800	4	NUT, HEX 18-8 SS, 5/16-18
14	66784400	3	NUT, HEX SERR LOCK 3/8-16
13	66405200	4	WASHER, FLAT 1/2" TYPE A
12	66404400	2	WASHER, FLAT 3/8" NARROW TYPE A
11	66105700	2	NUT, HEX JAM 9/16-18
10	62584442	2	HHCS, 3/8-16 X 3.00"
9	62584435	1	HHCS, 3/8-16 X 2.25"
8	62583826	2	HHCS, 5/16-18 X 1.25"
7	53066155	2	ELL, 90 .38" RASC-2000-6
6	53065156	2	ELL, 90 M .50"X3/4-16 W/O-RING
5	53060006	2	TEE, BHD M .38" AC3209-6
4	53059036	2	ELL, 45 M .38X.50" AC4500-6-8
3	53057006	4	ELL, 90 M BULKHEAD .38" AC2209-6
2	53053041	2	ADAPTER, M .50X.50" AC1000-8-8
1	53053036	2	ADAPTER, M .38X.50" AC1000-6-8

- NOTES:
1. DO NOT SCALE FROM DRAWING.
 2. ONE PIECE REQUIRED PER K000-00196: ROLLER MILL ASSY, DUAL DRIVE 20 X 42".
 3. APPLY PIPE TAPE TO ALL MALE FITTINGS BEFORE ASSEMBLY.
 4. 66105700: NUT, HEX JAM 9/16-18, INCLUDED WITH FITTINGS 53057006 & 53060006.
 5. NITROGEN PRECHARGE ACCUMULATORS TO 400 PSI / 28.1 kg/sq cm.
 6. ALTERNATIVE UNITS [X.X] IN MILLIMETERS.

This drawing is the property of the A.T. Ferrell Company, Inc and must be returned immediately upon request. No part of this drawing may be reproduced, stored in retrieval system or transmitted in any form or by any means, without prior written consent of the A.T. Ferrell Company, Inc

CAD
NO MANUAL CHANGES
TOLERANCES EXCEPT AS NOTED

FINISH: NONE
SCALE: 1:8
DATE: 4/19/2005

DIVISION OF A.T. FERRELL COMPANY
BLUFFTON, INDIANA - USA

DRAWN BY: dmj
APPROVED BY: DMJ

TITLE: HYDRAULIC ASSY, DUAL DRIVE 20 X 42"
PART NUMBER: M322024266
SHEET: 1 of 1