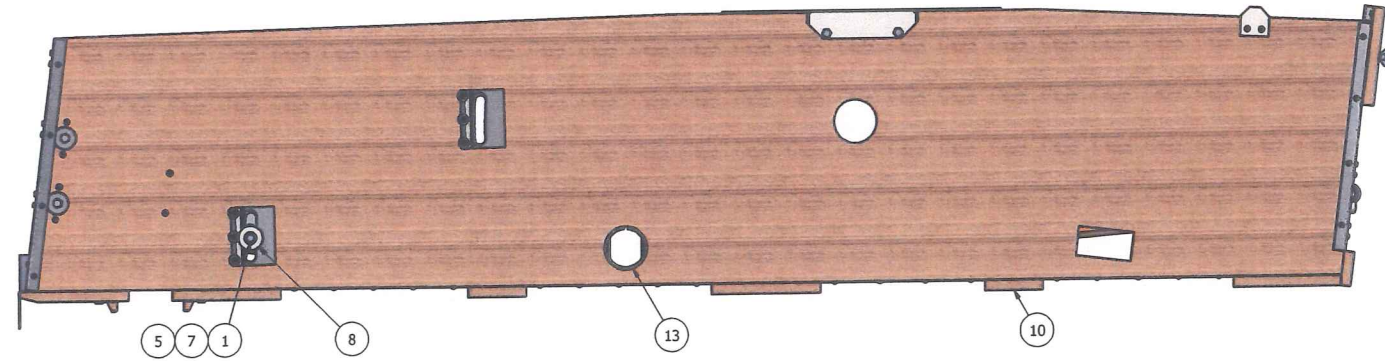
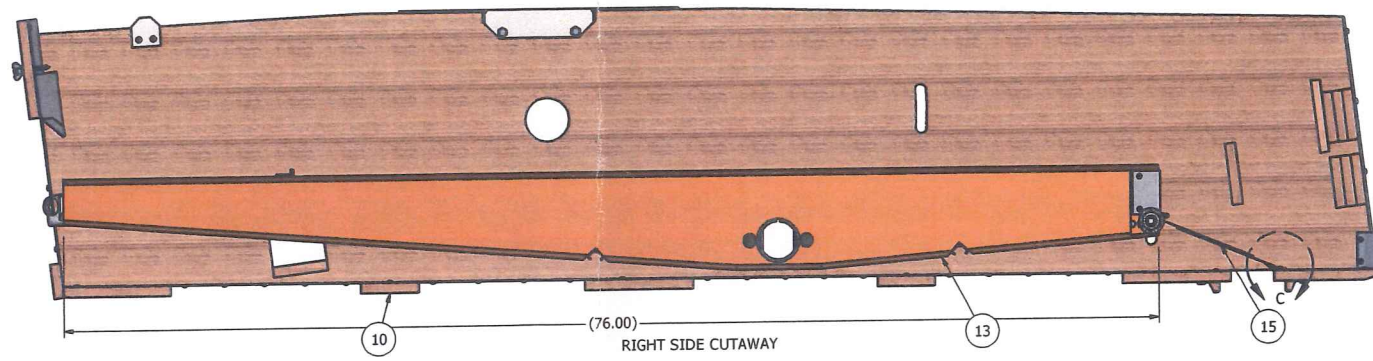
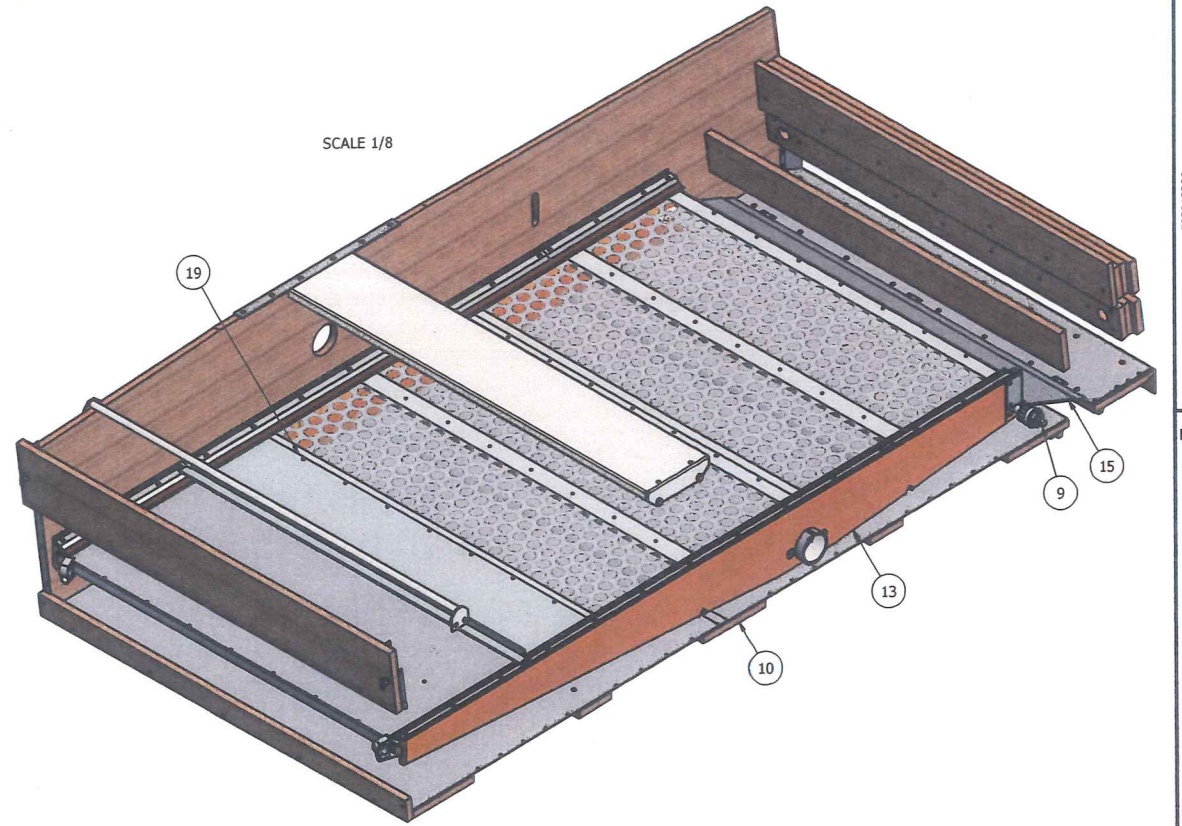


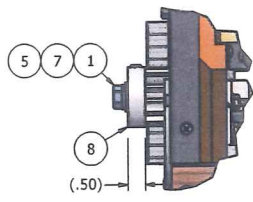
REVISION HISTORY				
REV	ECN	DESCRIPTION	DATE	APPROVED
A	XXXXXX	RELEASE	5/21/1957	DR
B	F120091	WAS GROUP DRAWING, ADD SHEETS 2 & 3	9/17/2012	dmjohnson



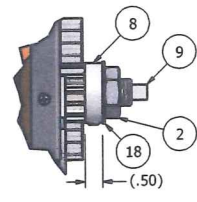
STEP 1: LEFT SIDE VIEW, LOWER ROCKER INSTALLATION



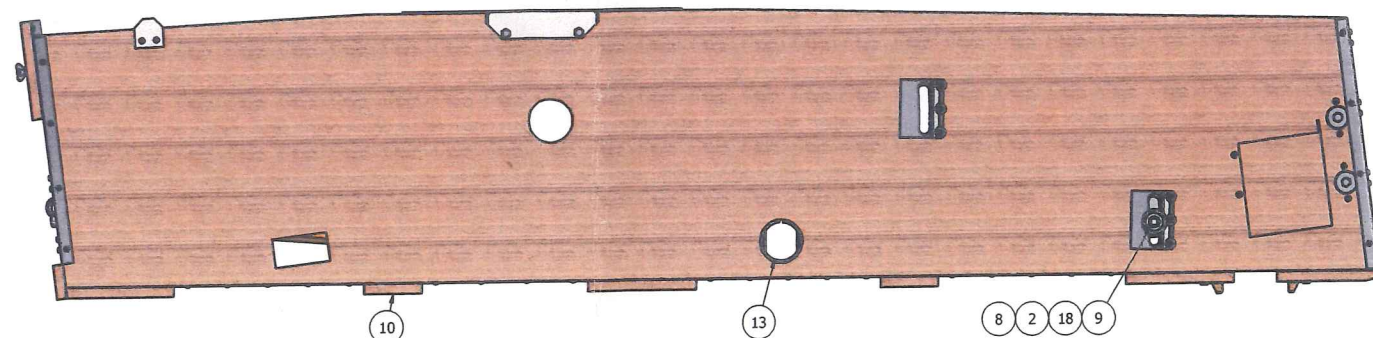
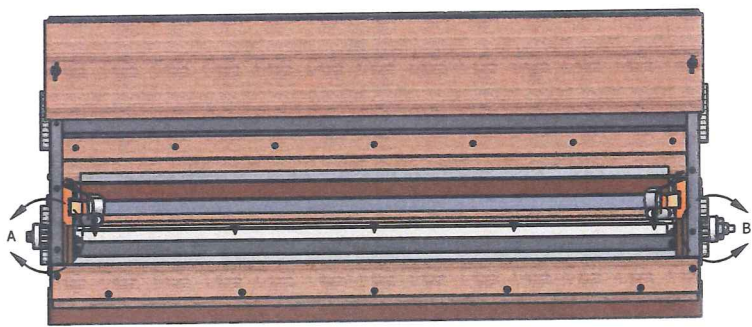
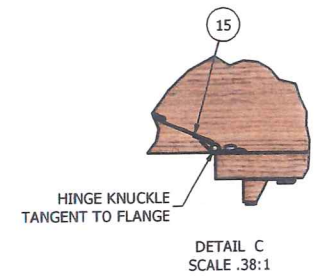
RIGHT SIDE CUTAWAY



DETAIL A
SCALE 0.38 : 1




DETAIL B
SCALE 0.38 : 1



STEP 1: RIGHT SIDE VIEW, BOTTOM ROCKER INSTALLATION

ITEM	PART NUMBER	QTY	DESCRIPTION
* 19	SALES ORDER	2	SCREEN ASSY, MFG PERF MTL, 60" X #9
18	F84621034	2	WASHER, FLT .750 X 1.750 X .062
17	F82071401	2	STUD, DOWEL 1/4-20 X 2.50"
* 16	F08308840	1	SPOUT, RH STRAW, X29
15	F03502780	1	APRON ASSY, TELE BTM ROCKER, BTM SHOE, SX29D
14	F03502777	1	APRON ASSY, TOP ROCKER, BOTTOM SHOE, SX29D
13	F03502000	1	ROCKER ASSY, BOTTOM, BOTTOM SHOE, SX29D
12	F03501900	1	ROCKER ASSY, TOP, BOTTOM SHOE, SX29D
11	F03401600	1	APRON ASSY, 1.25 X 40.50", SEED #9
10	F03013200	1	SHOE ASSY, BOTTOM RH, SX29D
9	F01608320	2	SHAFT, ROCKER TILT .75 X 48.5" #9
8	F01200203	4	PINION, BRUSH ADJ. 13 TOOTH W/SET SCREWS
7	66444400	2	WASHER, LOCK HELICAL 3/8"
6	66443300	2	WASHER, LOCK HELICAL 1/4"
5	66404400	2	WASHER, FLAT 3/8" NARROW TYPE A
4	66403300	2	WASHER, FLAT, 1/4"
3	66363300	2	NUT, WING 1/4-20 TYPE B STYLE 1
2	66276400	2	NUT, HEAVY HEX JAM 3/4-10
1	62584422	2	HCS, 3/8-16 X 1.00"

NOTES:
1. DO NOT SCALE FROM DRAWING.
2. ONE PIECE REQUIRED PER F41400294: CLEANER ASSY, RH W/BRUSHES, SX29D.
3. * LINE ITEM ON SALES ORDER. NOT INCLUDED IN BILL OF MATERIAL.



CLIPPER
SWANSEY TECHNOLOGIES
SINCE 1864

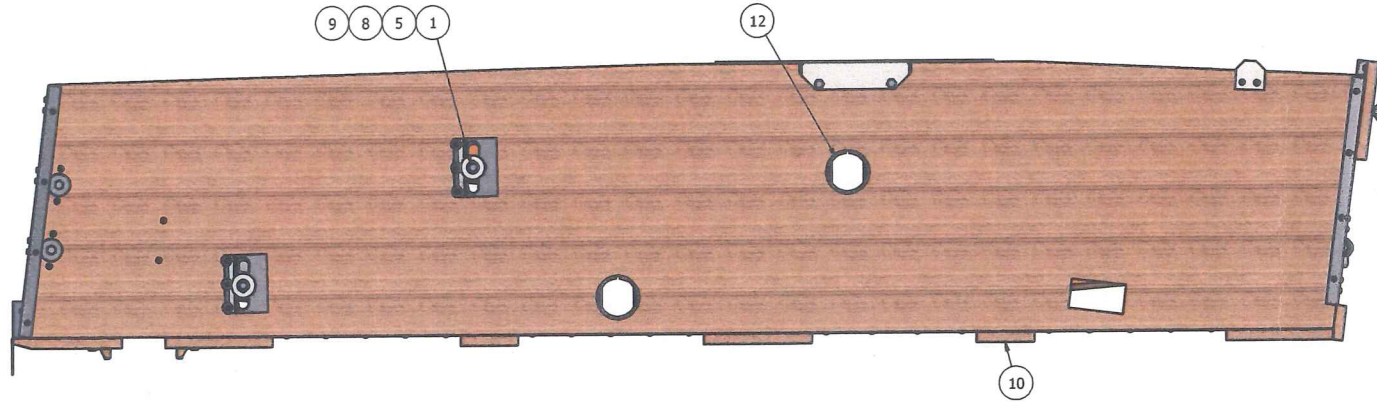
DIVISION OF
A.T. FERRELL COMPANY
1440 S ADAMS ST
BLUFFTON, INDIANA
46714 - USA
PH: 260-824-3400
FAX: 260-824-5463

This drawing is the property of the A.T. Ferrell Company, Inc and must be returned immediately upon request. No part of this drawing may be reproduced, stored in a retrieval system or transmitted in any form or by any means, without prior written consent of the A.T. Ferrell Company, Inc.

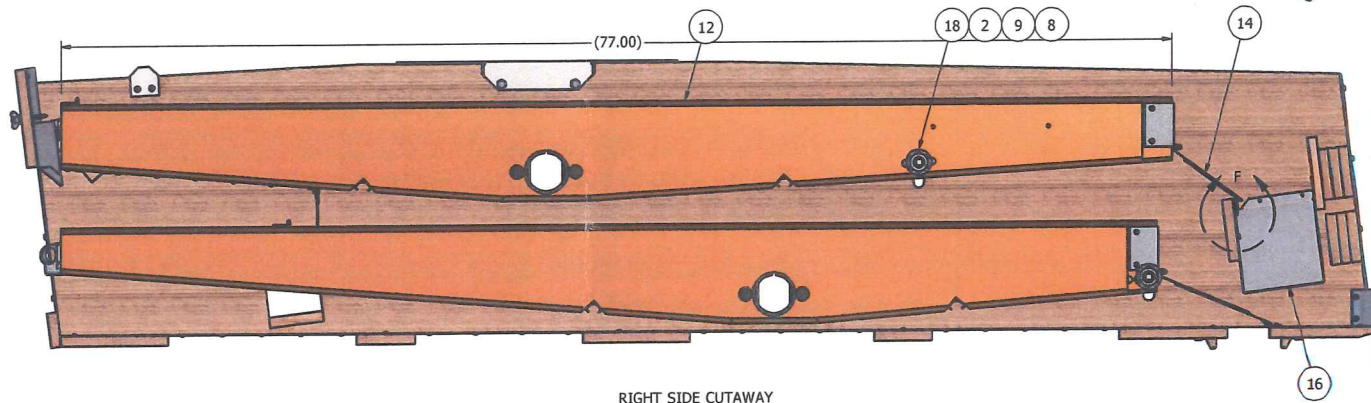
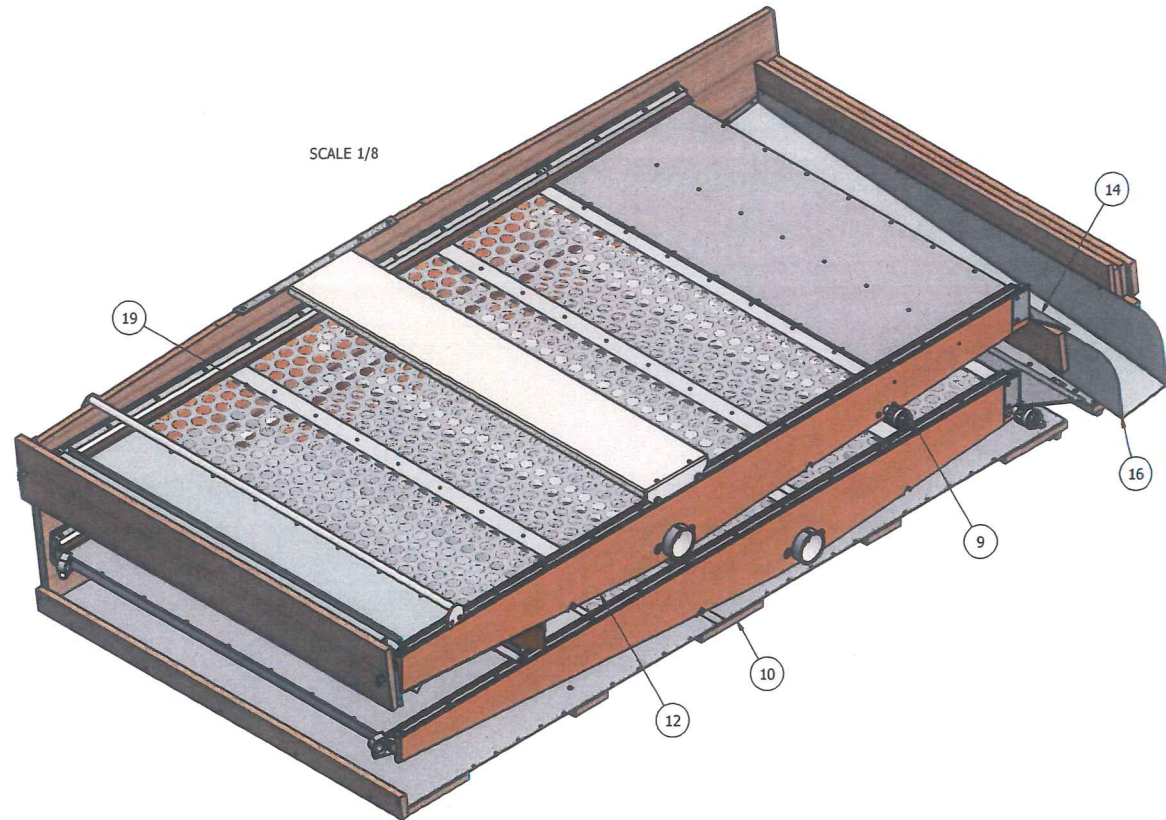
TOLERANCES EXCEPT AS NOTED:	TITLE:
DECIMAL: ± .005	SHOE ASSY, RH BOTTOM W/ROCKERS, SX29D
FRACTIONAL: ± 1/32	
ANGULAR: ± 1/2°	
FINISH: NONE	
CAD NO MANUAL CHANGES	

SCALE: 0.16:1	SHEET: 1 OF 3	SIZE: D	PART NUMBER: F03013206	REV: B
---------------	---------------	---------	------------------------	--------

REVISION HISTORY				
REV	ECN	DESCRIPTION	DATE	APPROVED
A	XXXXXX	RELEASE	5/21/1957	DR
B	F120091	WAS GROUP DRAWING, ADD SHEETS 2 & 3	9/17/2012	dmjohnson



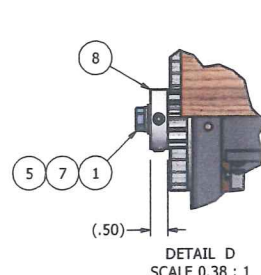
STEP 2: LEFT SIDE VIEW, UPPER ROCKER INSTALLATION



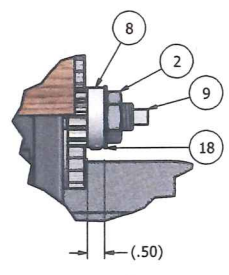
RIGHT SIDE CUTAWAY

SPOUT EDGE FLUSH & HINGE KNUCKLE TANGENT

TEMPORARILY MOUNT SPOUT IN PLACE. LOCATE & DRILL APRON HINGE HOLES THRU SPOUT. REMOVE SPOUT. APRON & SPOUT INSTALLED AFTER SHOE INSTALLED IN FRAME.

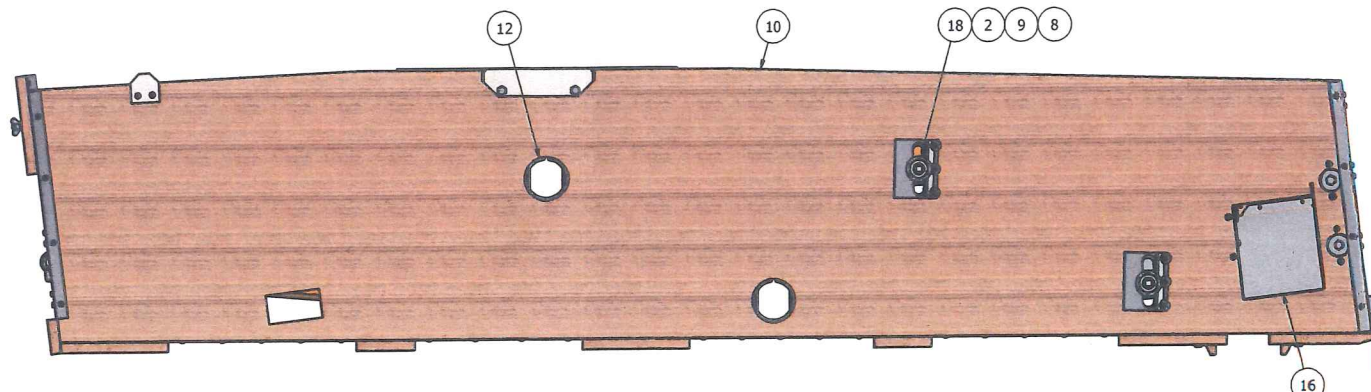


DETAIL D
SCALE 0.38 : 1



DETAIL E
SCALE 0.38 : 1

DETAIL F
SCALE 0.38 : 1



STEP 2: RIGHT SIDE VIEW, UPPER ROCKER INSTALLATION

* 19	SALES ORDER	2	SCREEN ASSY, MFG PERF MTL, 60" X #9
18	F84621034	2	WASHER, FLT .750 X 1.750 X .062
17	F82071401	2	STUD, DOWEL 1/4-20 X 2.50"
16	F08308840	1	SPOUT, RH STRAW, X29
* 15	F03502780	1	APRON ASSY, TELE BTM ROCKER, BTM SHOE, SX29D
14	F03502777	1	APRON ASSY, TOP ROCKER, BOTTOM SHOE, SX29D
13	F03502000	1	ROCKER ASSY, BOTTOM, BOTTOM SHOE, SX29D
12	F03501900	1	ROCKER ASSY, TOP, BOTTOM SHOE, SX29D
11	F03401600	1	APRON ASSY, 1.25 X 40.50", SEED #9
10	F03013200	1	SHOE ASSY, BOTTOM RH, SX29D
9	F01608320	2	SHAFT, ROCKER TILT .75 X 48.5" #9
8	F01200203	4	PINION, BRUSH ADJ. 13 TOOTH W/SET SCREWS
7	66444400	2	WASHER, LOCK HELICAL 3/8"
6	66443300	2	WASHER, LOCK HELICAL 1/4"
5	66404400	2	WASHER, FLAT 3/8" NARROW TYPE A
4	66403300	2	WASHER, FLAT, 1/4"
3	66363300	2	NUT, WING 1/4-20 TYPE B STYLE 1
2	66276400	2	NUT, HEAVY HEX JAM 3/4-10
1	62584422	2	HHCS, 3/8-16 X 1.00"
ITEM	PART NUMBER	QTY	DESCRIPTION

CLIPPER SEPARATION TECHNOLOGIES SINCE 1989

DIVISION OF
A.T. FERRELL COMPANY
1440 S ADAMS ST
BLUFFTON, INDIANA
46714 - USA
PH: 260-824-3400
FAX: 260-824-5483

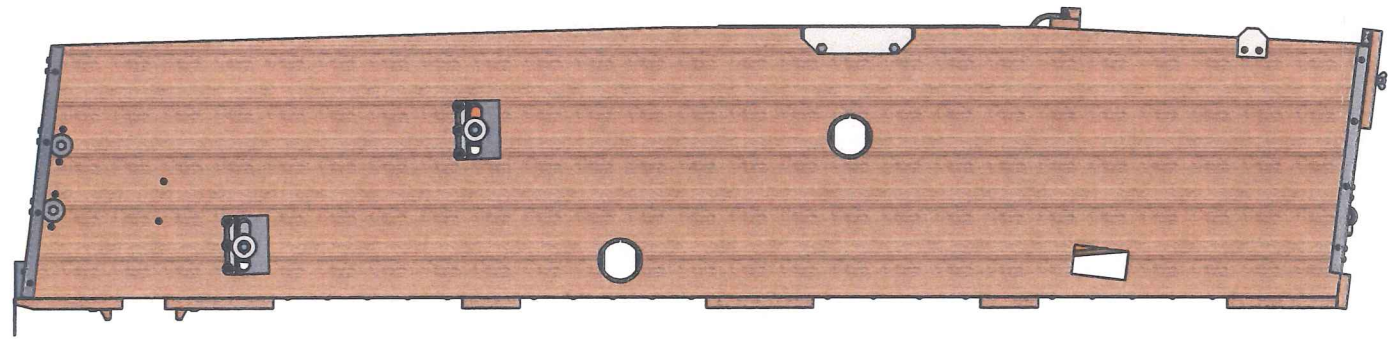
This drawing is the property of the A.T. Ferrell Company, Inc and must be returned immediately upon request. No part of this drawing may be reproduced, stored in a retrieval system or transmitted in any form or by any means, without prior written consent of the A.T. Ferrell Company, Inc.

DRAWN BY: dmjohnson
DRAWN DATE: 9/17/2012
APPROVED BY: DMJ

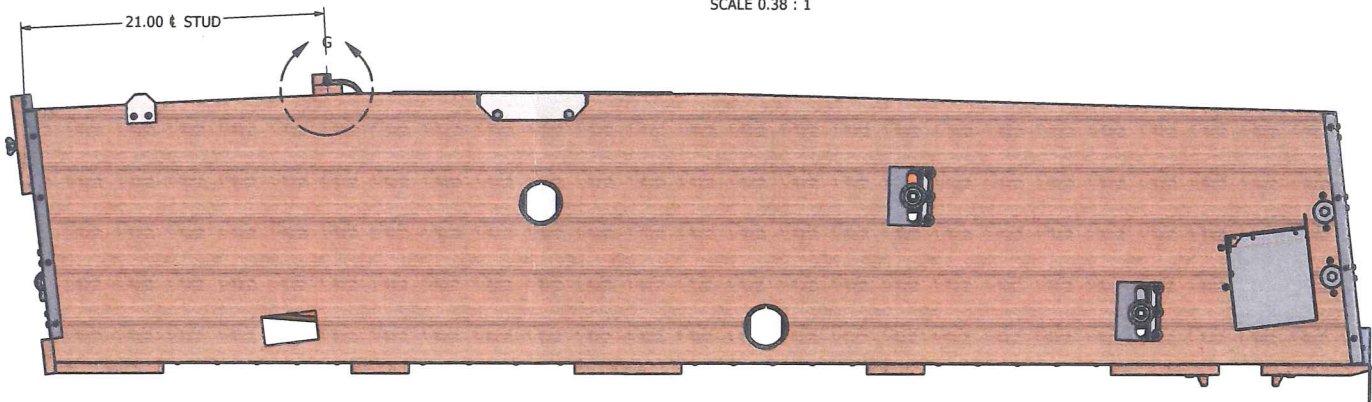
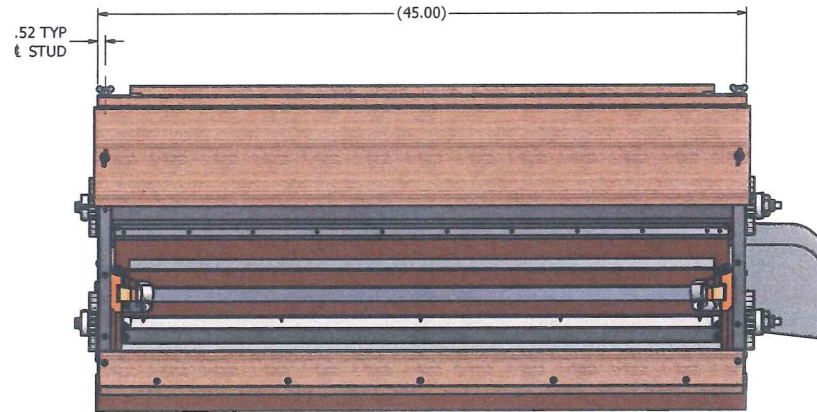
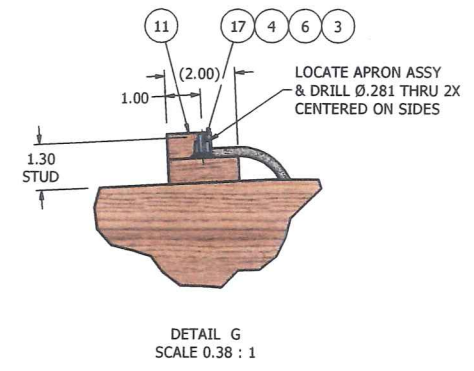
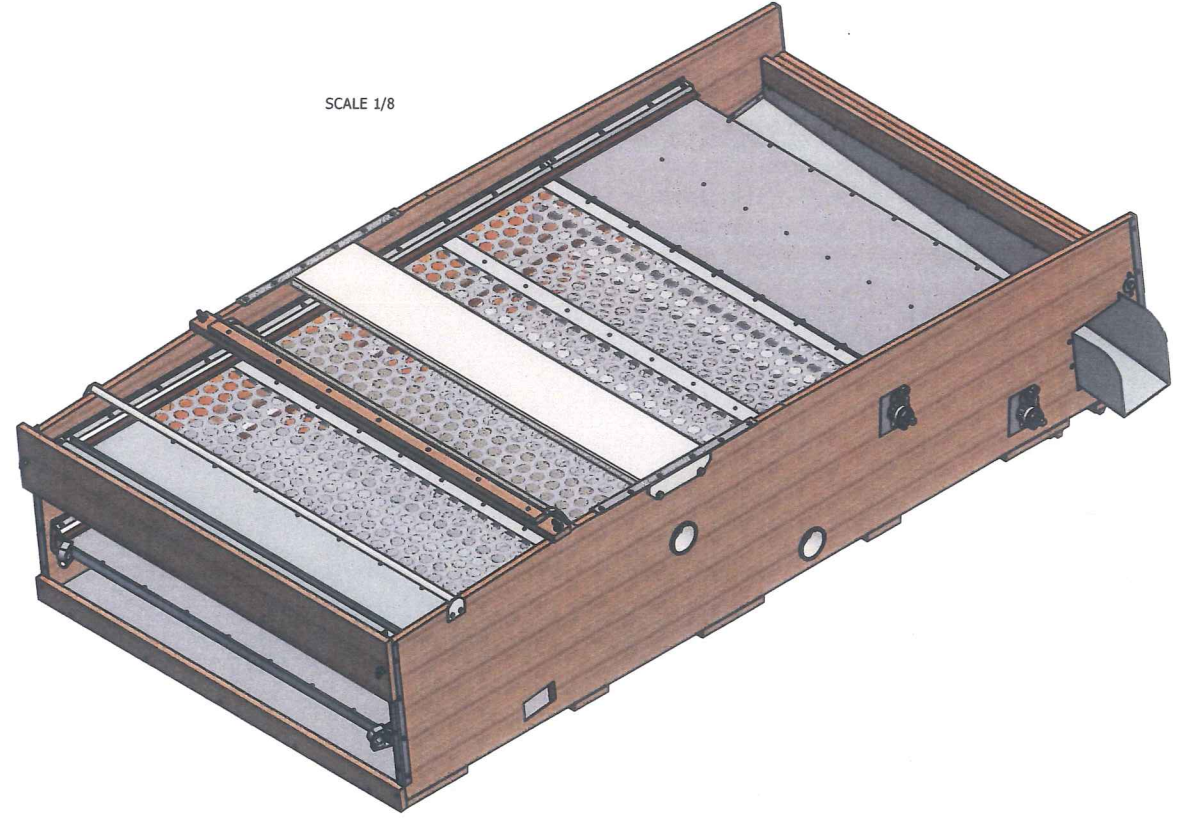
TOLERANCES EXCEPT AS NOTED:	TITLE: SHOE ASSY, RH BOTTOM W/ROCKERS, SX29D
DECIMAL: XX ± .031	FRACTIONAL: XX ± 1/32
XXX ± .005	ANGULAR: ± 1/2°
XXXX ± .001	NONE
CAD NO MANUAL CHANGES	SCALE: 0.16:1 SHEET: 2 OF 3 SIZE: D PART NUMBER: F03013206 REV: B

- NOTES:
- DO NOT SCALE FROM DRAWING.
 - ONE PIECE REQUIRED PER F41400294: CLEANER ASSY, RH W/BRUSHES, SX29D.
 - * LINE ITEM ON SALES ORDER. NOT INCLUDED IN BILL OF MATERIAL.

REVISION HISTORY				
REV	ECN	DESCRIPTION	DATE	APPROVED
A	XXXXXX	RELEASE	5/21/1957	DR
B	F120091	WAS GROUP DRAWING, ADD SHEETS 2 & 3	9/17/2012	dmjohnson




STEP 3: LEFT SIDE VIEW, COMPLETE



STEP 3: RIGHT SIDE VIEW, COMPLETE

ITEM	PART NUMBER	QTY	DESCRIPTION
* 19	SALES ORDER	2	SCREEN ASSY, MFG PERF MTL, 60" X #9
18	F84621034	2	WASHER, FLT .750 X 1.750 X .062
17	F82071401	2	STUD, DOWEL 1/4-20 X 2.50"
* 16	F08308840	1	SPOUT, RH STRAW, X29
15	F03502780	1	APRON ASSY, TELE BTM ROCKER, BTM SHOE, SX29D
14	F03502777	1	APRON ASSY, TOP ROCKER, BOTTOM SHOE, SX29D
13	F03502000	1	ROCKER ASSY, BOTTOM, BOTTOM SHOE, SX29D
12	F03501900	1	ROCKER ASSY, TOP, BOTTOM SHOE, SX29D
11	F03401600	1	APRON ASSY, 1.25 X 40.50", SEED #9
10	F03013200	1	SHOE ASSY, BOTTOM RH, SX29D
9	F01608320	2	SHAFT, ROCKER TILT .75 X 48.5" #9
8	F01200203	4	PINION, BRUSH ADJ. 13 TOOTH W/SET SCREWS
7	66444400	2	WASHER, LOCK HELICAL 3/8"
6	66443300	2	WASHER, LOCK HELICAL 1/4"
5	66404400	2	WASHER, FLAT 3/8" NARROW TYPE A
4	66403300	2	WASHER, FLAT, 1/4"
3	66363300	2	NUT, WING 1/4-20 TYPE B STYLE 1
2	66276400	2	NUT, HEAVY HEX JAM 3/4-10
1	62584422	2	HHCS, 3/8-16 X 1.00"

NOTES:
1. DO NOT SCALE FROM DRAWING.
2. ONE PIECE REQUIRED PER F41400294: CLEANER ASSY, RH W/BRUSHES, SX29D.
3. * LINE ITEM ON SALES ORDER. NOT INCLUDED IN BILL OF MATERIAL.



CLIPPER
SEPARATION TECHNOLOGIES
SINCE 1869

DIVISION OF
A.T.FERRELL COMPANY
1440 S ADAMS ST
BLUFFTON, INDIANA
46714 - USA
PH: 260-824-3400
FAX: 260-824-5463

This drawing is the property of the A.T. Ferrell Company, Inc. and must be returned immediately upon request. No part of this drawing may be reproduced, stored in a retrieval system or transmitted in any form or by any means, without prior written consent of the A.T. Ferrell Company, Inc.

TOLERANCES EXCEPT AS NOTED:	TITLE:
DECIMAL: XX ± .030 FRACTIONAL: ± 1/32	SHOE ASSY, RH BOTTOM W/ROCKERS, SX29D
XXX ± .005 ANGULAR: ± 1/2°	FINISH: NONE
XXXX ± .001	ANGULAR: ± 1/2°
CAD NO MANUAL CHANGES	SCALE: 0.16:1 SHEET: 3 OF 3 SIZE: D PART NUMBER: F03013206 REV: B