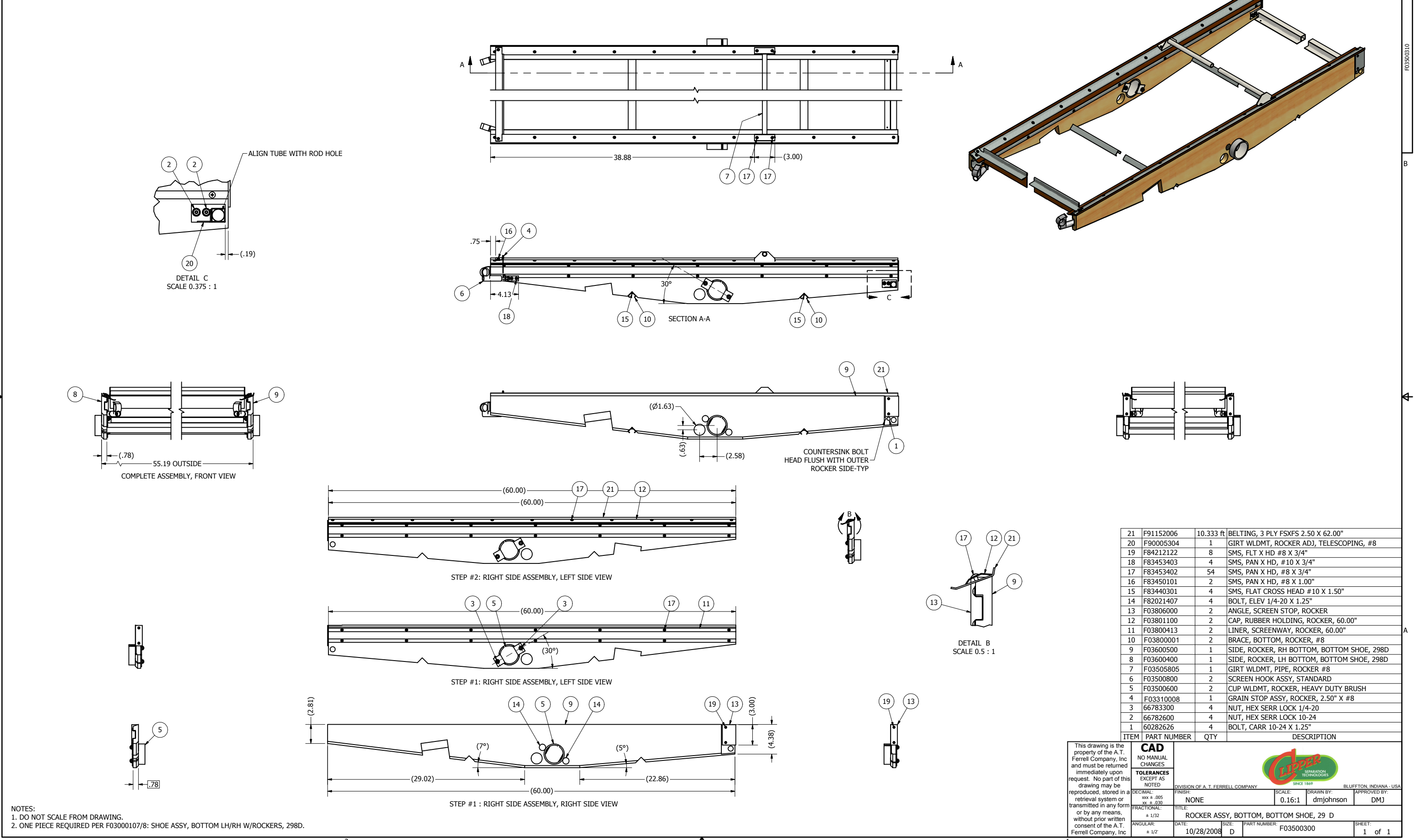


REV	ECN	DESCRIPTION	DATE	APPROVED
A	XXXXXX	RELEASE	2/19/1951	RH
B	F120129	REDRAWN CAD, WAS C SIZE	11/29/2012	dmjohnson
C	F130043	ADDED DEPICTION OF BRUSH HOLE (SIZE AND LOCATION)	4/9/2013	jlmoos



NOTES:
 1. DO NOT SCALE FROM DRAWING.
 2. ONE PIECE REQUIRED PER F03000107/8: SHOE ASSY, BOTTOM LH/RH W/ROCKERS, 298D.

ITEM	PART NUMBER	QTY	DESCRIPTION
21	F91152006	10.333 ft	BELTING, 3 PLY FSXFS 2.50 X 62.00"
20	F90005304	1	GIRT WLDMT, ROCKER ADJ, TELESCOPING, #8
19	F84212122	8	SMS, FLT X HD #8 X 3/4"
18	F83453403	4	SMS, PAN X HD, #10 X 3/4"
17	F83453402	54	SMS, PAN X HD, #8 X 3/4"
16	F83450101	2	SMS, PAN X HD, #8 X 1.00"
15	F83440301	4	SMS, FLAT CROSS HEAD #10 X 1.50"
14	F82021407	4	BOLT, ELEV 1/4-20 X 1.25"
13	F03806000	2	ANGLE, SCREEN STOP, ROCKER
12	F03801100	2	CAP, RUBBER HOLDING, ROCKER, 60.00"
11	F03800413	2	LINER, SCREENWAY, ROCKER, 60.00"
10	F03800001	2	BRACE, BOTTOM, ROCKER, #8
9	F03600500	1	SIDE, ROCKER, RH BOTTOM, BOTTOM SHOE, 298D
8	F03600400	1	SIDE, ROCKER, LH BOTTOM, BOTTOM SHOE, 298D
7	F03505805	1	GIRT WLDMT, PIPE, ROCKER #8
6	F03500800	2	SCREEN HOOK ASSY, STANDARD
5	F03500600	2	CUP WLDMT, ROCKER, HEAVY DUTY BRUSH
4	F03310008	1	GRAIN STOP ASSY, ROCKER, 2.50" X #8
3	66783300	4	NUT, HEX SERR LOCK 1/4-20
2	66782600	4	NUT, HEX SERR LOCK 10-24
1	60282626	4	BOLT, CARR 10-24 X 1.25"

This drawing is the property of the A.T. Ferrell Company, Inc and must be returned immediately upon request. No part of this drawing may be reproduced, stored in a retrieval system or transmitted in any form or by any means, without prior written consent of the A.T. Ferrell Company, Inc.

CAD
 NO MANUAL CHANGES

TOLERANCES EXCEPT AS NOTED
 DECIMAL: .005
 .010 ± .030
 FRACTIONAL: 1/32
 ANGULAR: ± 1/2°

DIVISION OF A. T. FERRELL COMPANY
 BLUFFTON, INDIANA - USA

FINISH: NONE
 SCALE: 0.16:1
 DRAWN BY: dmjohnson
 APPROVED BY: DMJ

TITLE: ROCKER ASSY, BOTTOM, BOTTOM SHOE, 29 D
 DATE: 10/28/2008
 SIZE: D
 PART NUMBER: F03500300
 SHEET: 1 of 1