

SERVICE MANUAL
AND
PARTS CATALOG
FOR YOUR
SUPER 49D



Grain, Seed and Bean Cleaners

SUPER 49D CLEANER PARTS SET UP WITH BRUSH SCREEN CLEANING

Top Fan Section

ITEM NO.	PAGE NO.	PART NUMBER	QTY.	DESCRIPTION
All	26	Not Available	1	Air Trunk Assembly Complete (Includes Below)
5	3	F01600700	1	Fan Shaft 1-15/16" X 64-1/4"
10	3	F92401150	2	1-15/16" Pillow Block Bearing
18	3	F05502300	2	6" Wide Hide Static Fan Assembly
215	26	F05501201	1	Right Side Top Fan Housing Assembly (Includes 2 Sides & Metal)
215	26	F05501204	1	Left Side Top Fan Housing Assembly(Includes 2 Sides & Metal)
15	1	F05003900	2	Top Fan Bleeder Inlet Slide Assembly
12	1	F04303132	1	Adjusting Handle & Rod 32" Long (Includes Handle With Knob)
12	1	F04303118	1	Adjusting Handle & Rod 18" Long (Includes Handle With Knob)
**	1	F04001600	1	Hand Crank Handle with wood Knob
4	1	F05313000	2	Adjusting handle shaft Bearing
	1	F01013500	2	Valve Control Assy Complete See attached picture

**Note: Front of the Machine is Where the Screens are Inserted Into the Machine.
Discharge Spouts are Determined by Standing at the Front and Facing the Machine.
Right Hand Discharge Spouts Would Discharge Towards Your Right Hand.**

TOP AIR DISCHARGE VALVE ASSEMBLY

ITEM NO.	PAGE NO.	PART NUMBER	QTY.	DESCRIPTION
21	ALL	F04500000	1	Complete Valve (9 wide)(Shaft not Included)
20	4	F01618000	1	Top Valve Shaft 1" x 48"
22	4	F04800010	1	Hinged Gate Weldment (9 wide)
**		F04600510	1	Gate Board
**		F92700004	2	Gate Springs
23	4	F04501401	1	#9 Discharge Roll Assemblby with Flanges (Around 30" Long) Measure Roll Length
25	4	40000038	4	1" Bore Flangette Stampings
186	4	F92460200	2	1" Bearing

NOTE: ASSEMBLY DOES NOT INCLUDE DRIVE SHEAVES OR SHAFT

****Refers to the previous listing number. May give parts within that assembly, right side-left side numbers, or numbers for parts that are specific to RH or LH machines.**

BRUSH SCREEN CLEANING SYSTEM

ITEM NO.	PAGE NO.	PART NUMBER	QTY.	DESCRIPTION
39	7	F01003001	2	Brush Adjusters-Control Side / Left Hand Side(Includes Parts Below)
	7	F01106101	1	Brush Idler Plate Left Hand
42	7	F01105400	1	Adjustments Handle with Spring
42	7	F82080060	1	Shoulder Bolt for Brush Adjuster
38	7	F01004902	3	Brush Adjusters - Idler Side / Right Hand Side(Includes Parts Below)
	7	F01106104	1	Brush Adjusting Plate Right Hand
43	7	F01106300	1	Idler Arm Support
43	7	F82080060	1	Shoulder Bolt for Brush Adjuster
39	7	F01003002	2	Brush Adjusters-Control Side / Right Hand Side(Includes Parts Below)
**	7	F01106003	1	Brush Idler Plate Right Hand
42	7	F01105400	1	Adjustments Handle with Spring
42	7	F82080060	1	Shoulder Bolt for Brush Adjuster
38	7	F01004901	3	Brush Adjusters - Idler Side / Left Hand Side (Includes Parts Below)
		F01106001	1	Brush Adjusting Plate Left Hand
43	7	F01106300	1	Idler Arm Support
43	7	F82080060	1	Shoulder Bolt for Brush Adjuster
		F01000200	8	Rope Sheave Assembly Complete See attached picture
		F09500200	8	Brush Carrier Assembly 18" x 46" See attached picture 10
		F01612101	2	Brush Carrier Shafts 1-3/16" x 52"
		F97700063	35	Wirelon Plastic Coated Steel Cable (In Feet)

BOTTOM FAN ASSEMBLY

ITEM NO.	PAGE NO.	PART NUMBER	QTY.	DESCRIPTION
		F01612410	1	Fan Shaft 1-1/2" X 62-1/2" (Includes Keys) See attached picture 11 & 12
		Not Available	2	6715 Halfmoon Bridgetree Housing with Bearing
		F92400022	2	Bearing <u>Insert Only</u> for Above
		Note: If housing is bad Items below must be substituted		
		F92401080	2	1-1/2" Pillow Block Bearing
		F02707300	2	Bridgetree Mounting Angle for Bearing
201	25	F06302020	1	Bottom Drum Iron 42-5/8" x 80"
203	25	F06302120	1	Discharge Chute 4"
204	25	F06304303	1	Breast Iron 42-5/8" x 26-1/2"

ECCENTRIC SHAFT ASSEMBLY

ITEM NO.	PAGE NO.	PART NUMBER	QTY.	DESCRIPTION
		F01623500	1	Eccentric Shaft 1-1/2" X 66-1/2" (Includes Keys) See attached pictures 15 & 16
		Not Available	2	6714 Halfmoon Flange Bearing
		F92400022	1	1-1/2" Bearing <u>Insert Only</u> for Below
		F92053126	1	6714 Flange Bearing Conversion Kit
		Not Available	1	7475 1-1/2" Halfmoon Bearing Complete w/Bearing
		F92400026	1	1-1/2" Halfmoon Bearing <u>Insert Only</u> for Above
		F19503600	2	1-1/2" Throw Eccentric Assembly Complete See attached picture 15B

NOTE: A FEW OF THE NEWER MACHINES HAD COUNTERWEIGHTS ADDED TO THE ECCENTRIC SHAFT

F01104600	4	Counterweight Ends
F01804410	2	Counterweight 11"

MAIN SHOE ASSEMBLY

ITEM NO.	PAGE NO.	PART NUMBER	QTY.	DESCRIPTION
		Not Available	1	Bottom Shoe Complete with Rockers Right Hand (F03006105) See attached drawing
		F03500400	1	Apron Assembly
		F08308302	1	Sand Spout Left Hand Machines (Check Measurements)
		F08308301	1	Sand Spout Right Hand Machines (Check Measurements)
		F08302230	1	Straw Spout Left Hand Machines (Check Measurements)
		F08302200	1	Straw Spout Right Hand Machines (Check Measurements)
		F01200203	4	Rocker adjusting system See attached picture
		F03500200	1	Top Rocker Assembly Complete See attached drawing
		F03500300	1	Bottom Rocker Assembly Complete See attached drawing
		F03016510	2	Front Hanger with Block on Both Sides
		F03102601	2	Shoeside Hanger Support Block
		F03016520	3	Back Shoe Hanger with Block

standing at the Front and Facing the Machine.

Right Hand Discharge Spouts Would Discharge Towards Your Right Hand.

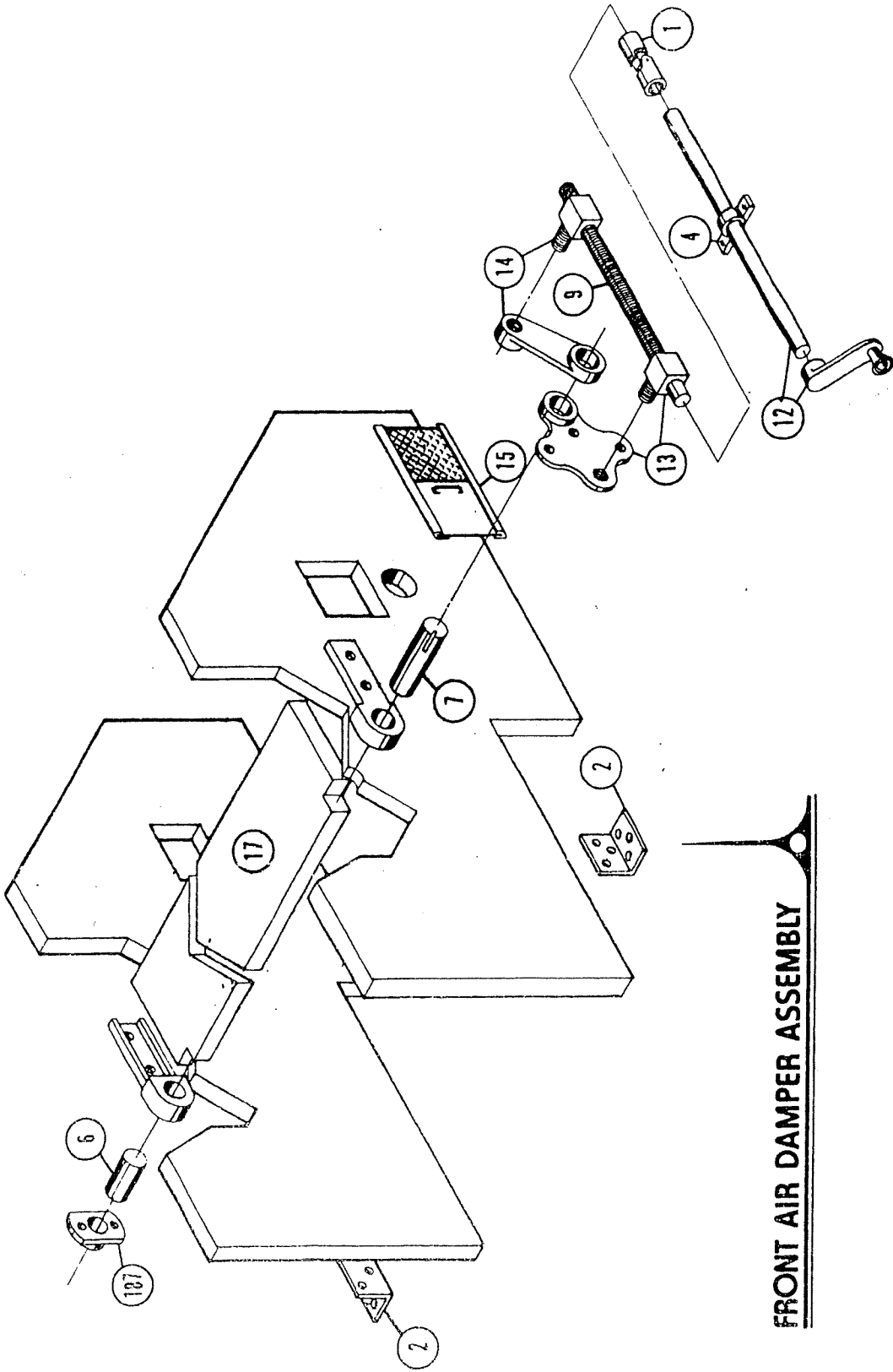
F01002803	1	Single Belt Idler Assembly Complete 5-1/2" See attached drawing
-----------	---	---------------------------------------------------------------------------

**The Following Are the Ball Tray Kit Parts That were
Installed on the Super 49D Cleaners in the Past**

**Old Style Ball Trays with 1" Square Turkey Wire That Came Out
With the Screens. Ball Trays were not attached to the Screens.**

F90005062	2	Ball Tray Weldment for 1 Piece Screens (NEW PUNCHED STYLE)
F80026102	216	White 1-3/8" Balls
		or
F90005063	2	Ball Tray Weldment for 2 Piece Screens (Bottom 26" Section) (NEW PUNCHED STYLE)
F90005069	2	Ball Tray Weldment for 2 Piece Screens (For Top 34" Section) (NEW PUNCHED STYLE)
F80026102	216	White 1-3/8" Balls (54 Per Tray)
F11301707	4	Ball Tray Support Rail 24"
F11301708	4	Ball Tray Support Rail 31"

31 OF FRONT SUPPLY & NO. 17 13 14 15 16 17 18 19 20 21 22 23 24 25 26 27 28 29 30 31 32 33 34 35 36 37 38 39 40 41 42 43 44 45 46 47 48 49 50 51 52 53 54 55 56 57 58 59 60 61 62 63 64 65 66 67 68 69 70 71 72 73 74 75 76 77 78 79 80 81 82 83 84 85 86 87 88 89 90 91 92 93 94 95 96 97 98 99 100



FRONT AIR DAMPER ASSEMBLY

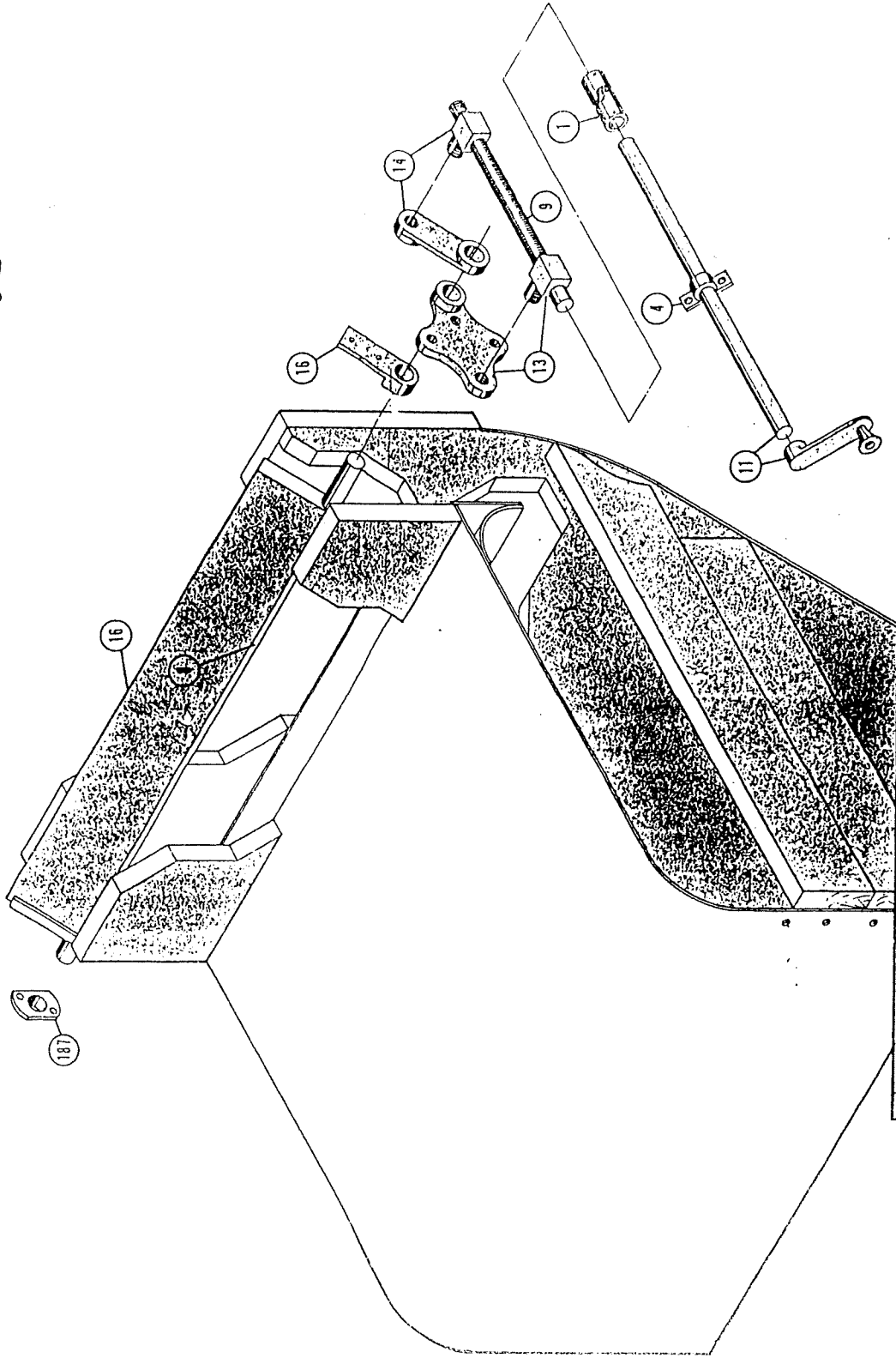
SYM	REVISION	DATE	BY	DATE	BY	SCALE	DATE	DWG. NO.	MACH. NO.

front air damper assembly

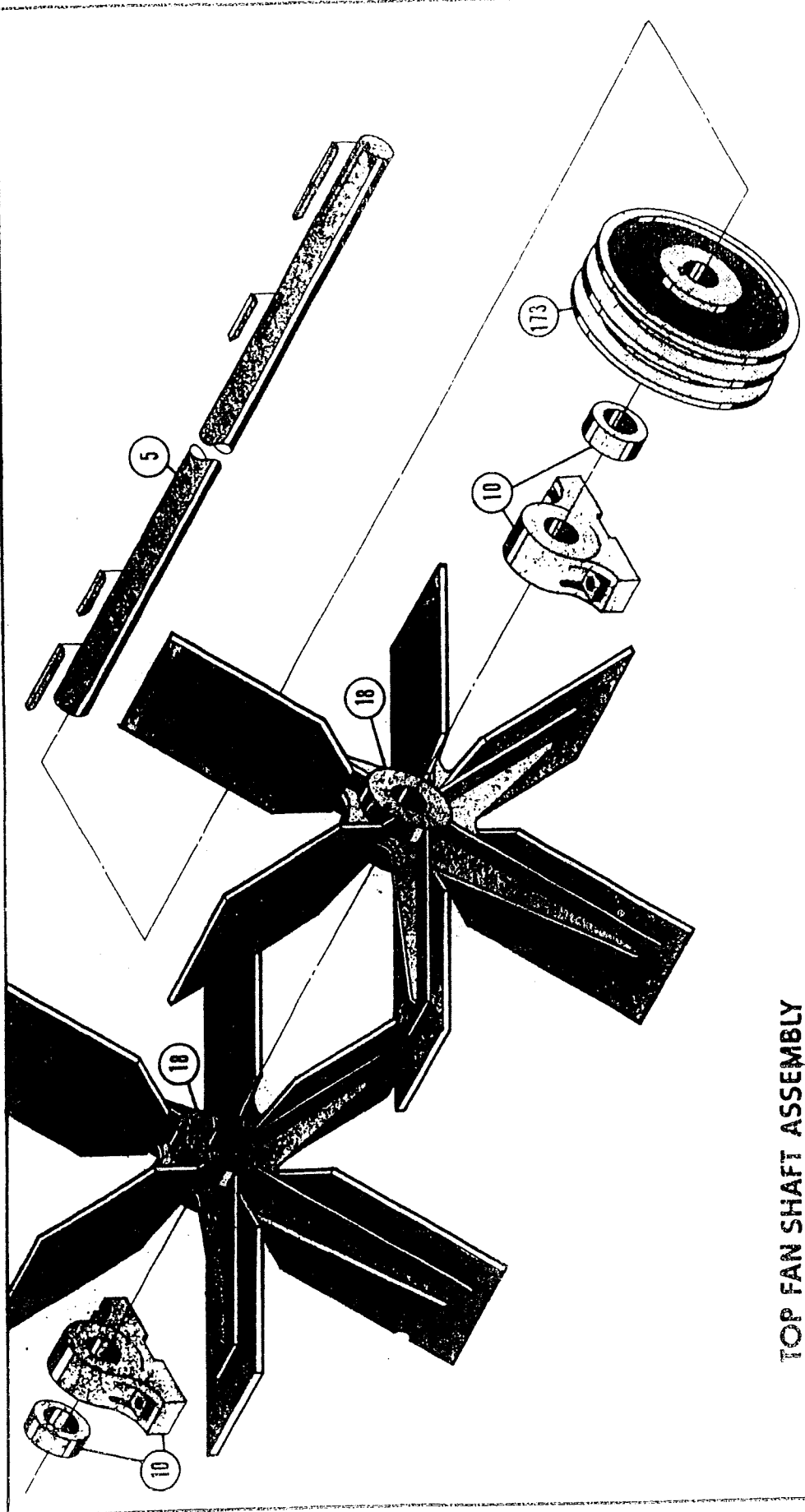
FERRELL - ROSS
SAGINAW, MICH.

DWG. NO.

BACK AIR DAMPER : TOP FAN SECTION



MACH. NO.		FERRELL - ROSS		DWC. NO.	
		SAGINAW, MICH.			
back air damper		SCALE		DATE	
TYPE	REVISION	DATE	BY	CHKD.	APP'D.



BLUF PRINT SUPPLY AND 12-78-3117

TOP FAN SHAFT ASSEMBLY

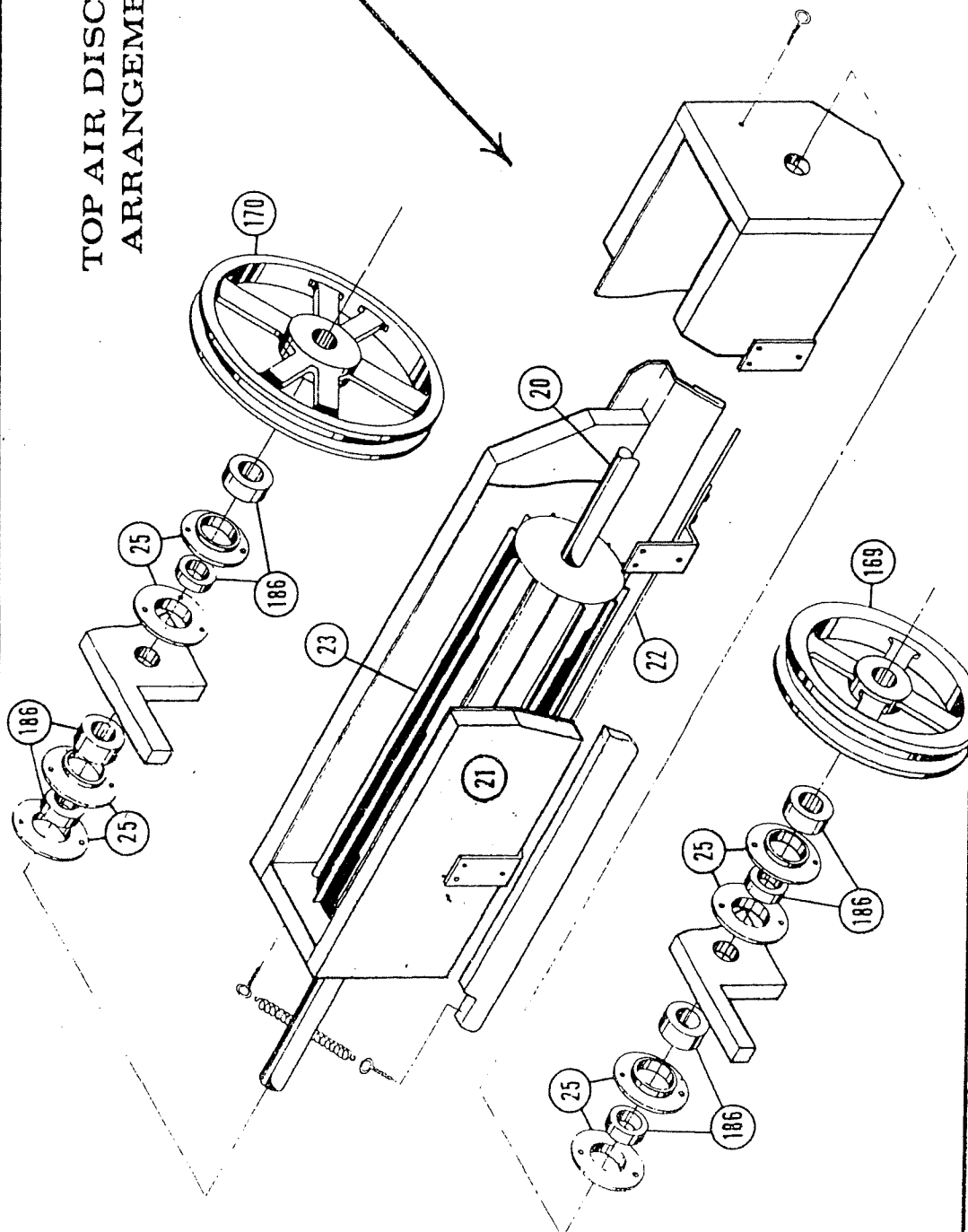
REV.	REVISION	DATE	BY

top fan shaft assembly

DWG NO. _____
DATE 12-28-77
SCALE _____
BY JDB

FERRELL - ROSS
SAGINAW, MICH.
MACH NO. _____

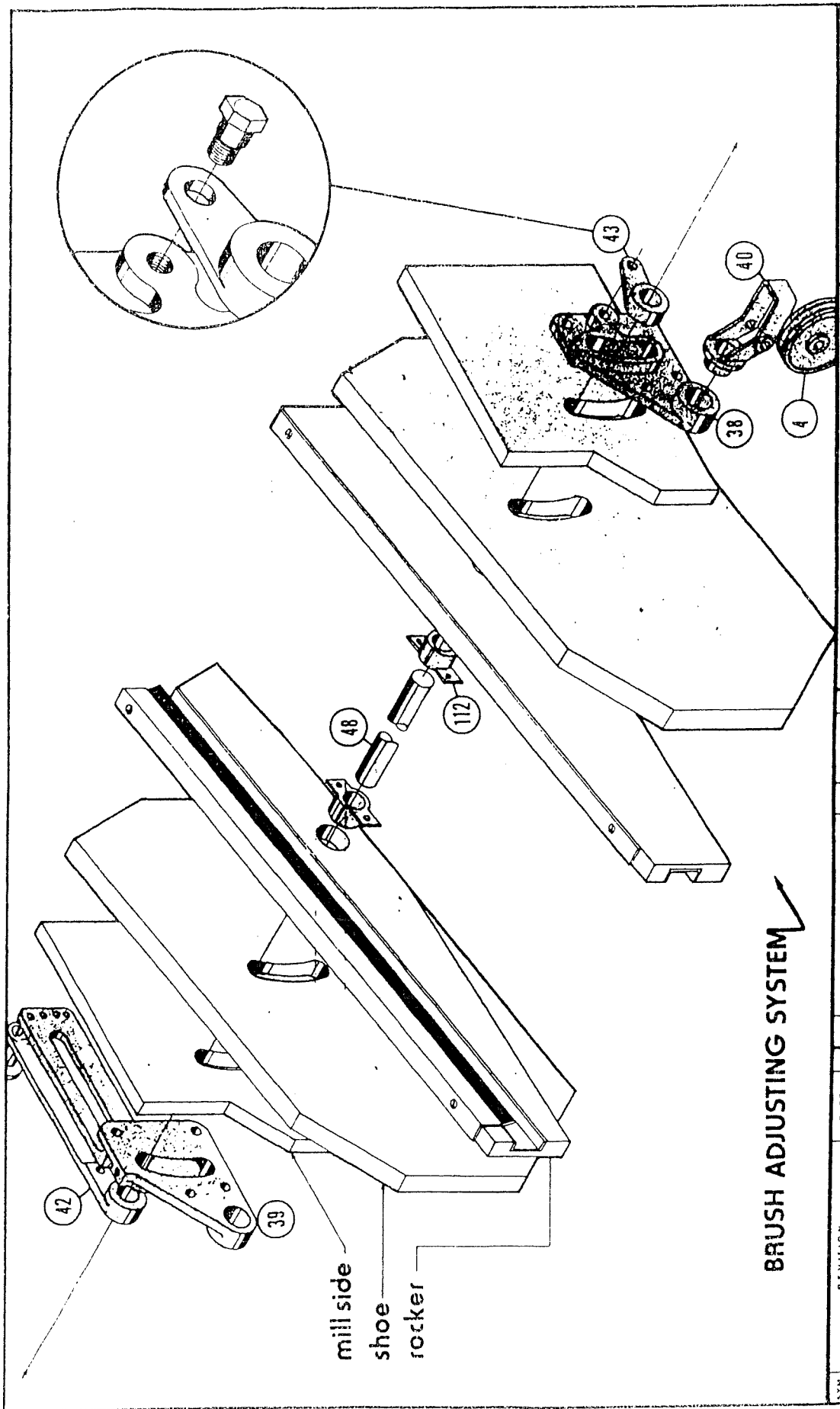
**TOP AIR DISCHARGE
ARRANGEMENT**



SYN		REVISION		DATE		DWG. BY J.D.B.		SCALE		DATE 12-30-77		DWG. NO.	
												FERRELL - ROSS SAGINAW, MICH.	
-top air discharge arrangement												MACH. NO.	

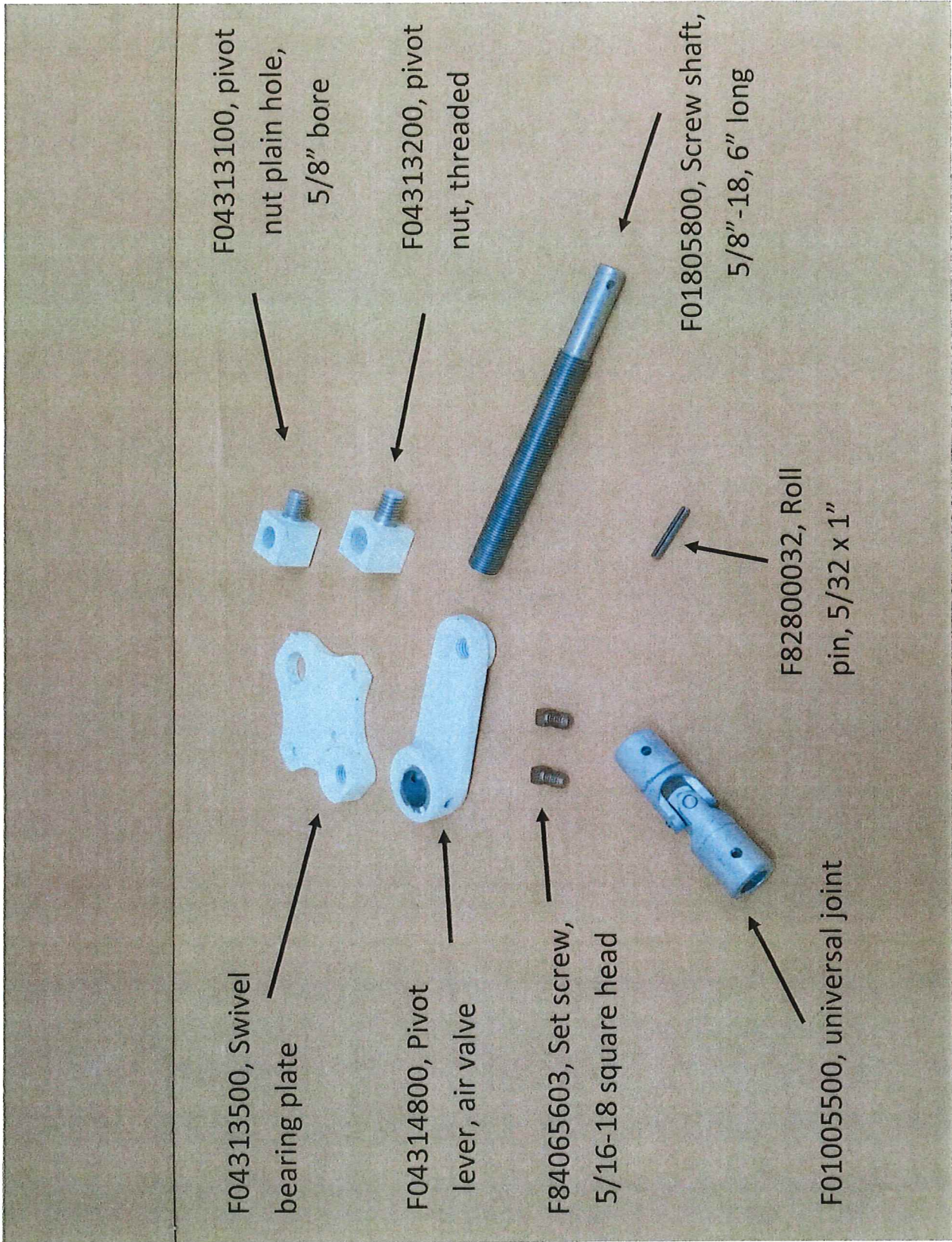
BLU-PRINT SUPPLY CO. 12-28-77

BLUE PRINT SUPPLY COMPANY, DETROIT



BRUSH ADJUSTING SYSTEM

SYN		REVISION		DATE		DR.		DWG. BY		SCALE		DATE	
FERRELL - ROSS								MACH. NO.					
SAGINAW, MICH.								DWG. NO.					



F04313100, pivot
nut plain hole,
5/8" bore

F04313200, pivot
nut, threaded

F01805800, Screw shaft,
5/8"-18, 6" long

F82800032, Roll
pin, 5/32 x 1"

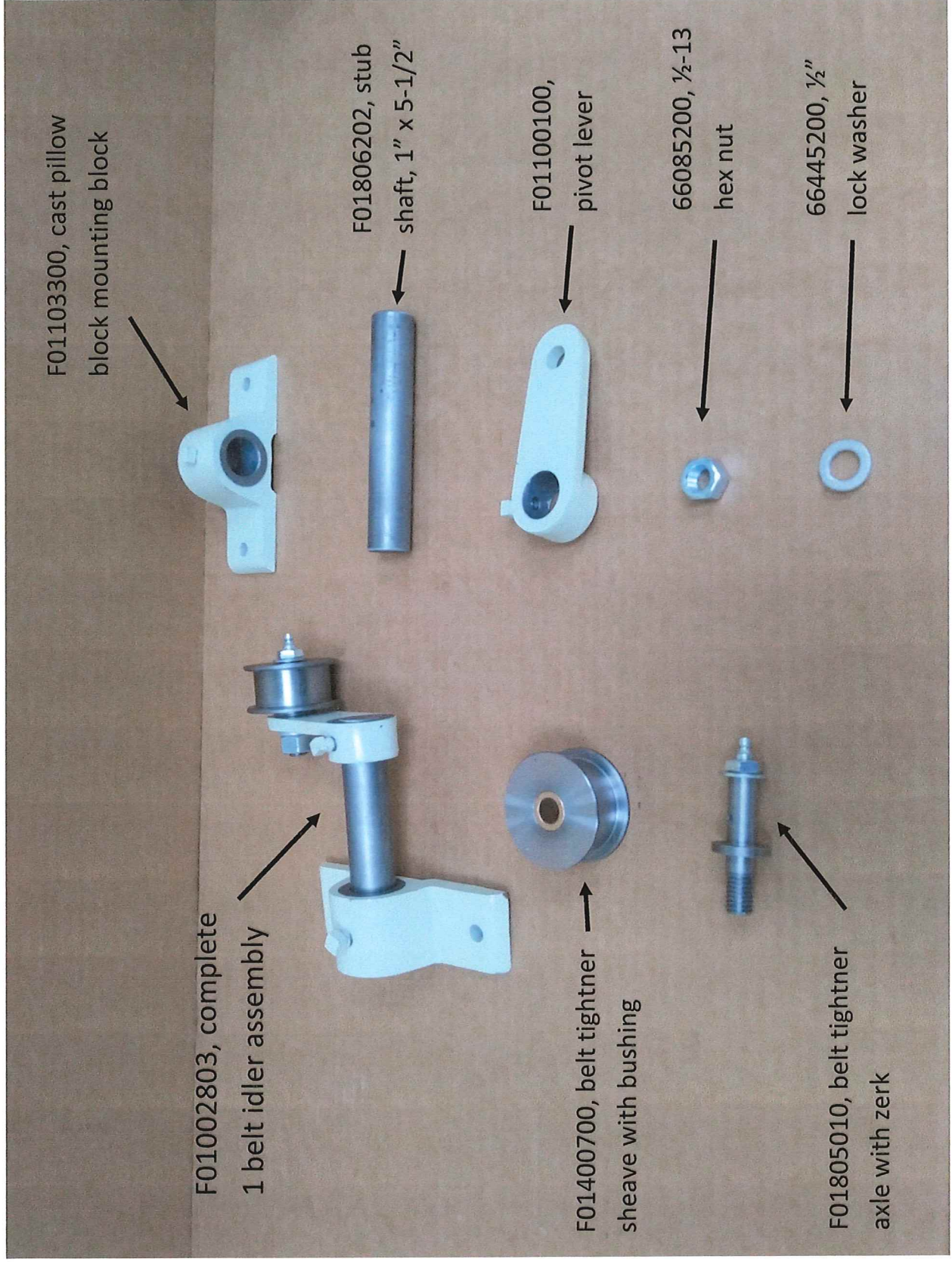
F04313500, Swivel
bearing plate

F04314800, Pivot
lever, air valve

F84065603, Set screw,
5/16-18 square head

F01005500, universal joint

F01013500, Gate valve adjusting assembly, ALL



F01103300, cast pillow
block mounting block



F01806202, stub
shaft, 1" x 5-1/2"



F01100100,
pivot lever



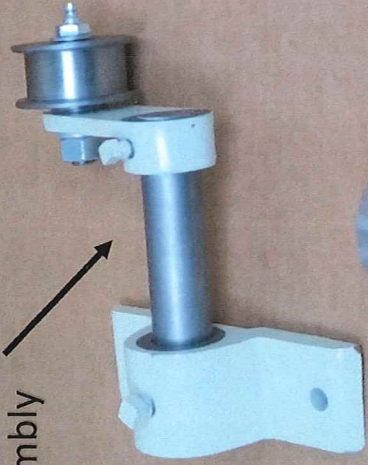
66085200, 1/2-13
hex nut



66445200, 1/2"
lock washer



F01002803, complete
1 belt idler assembly



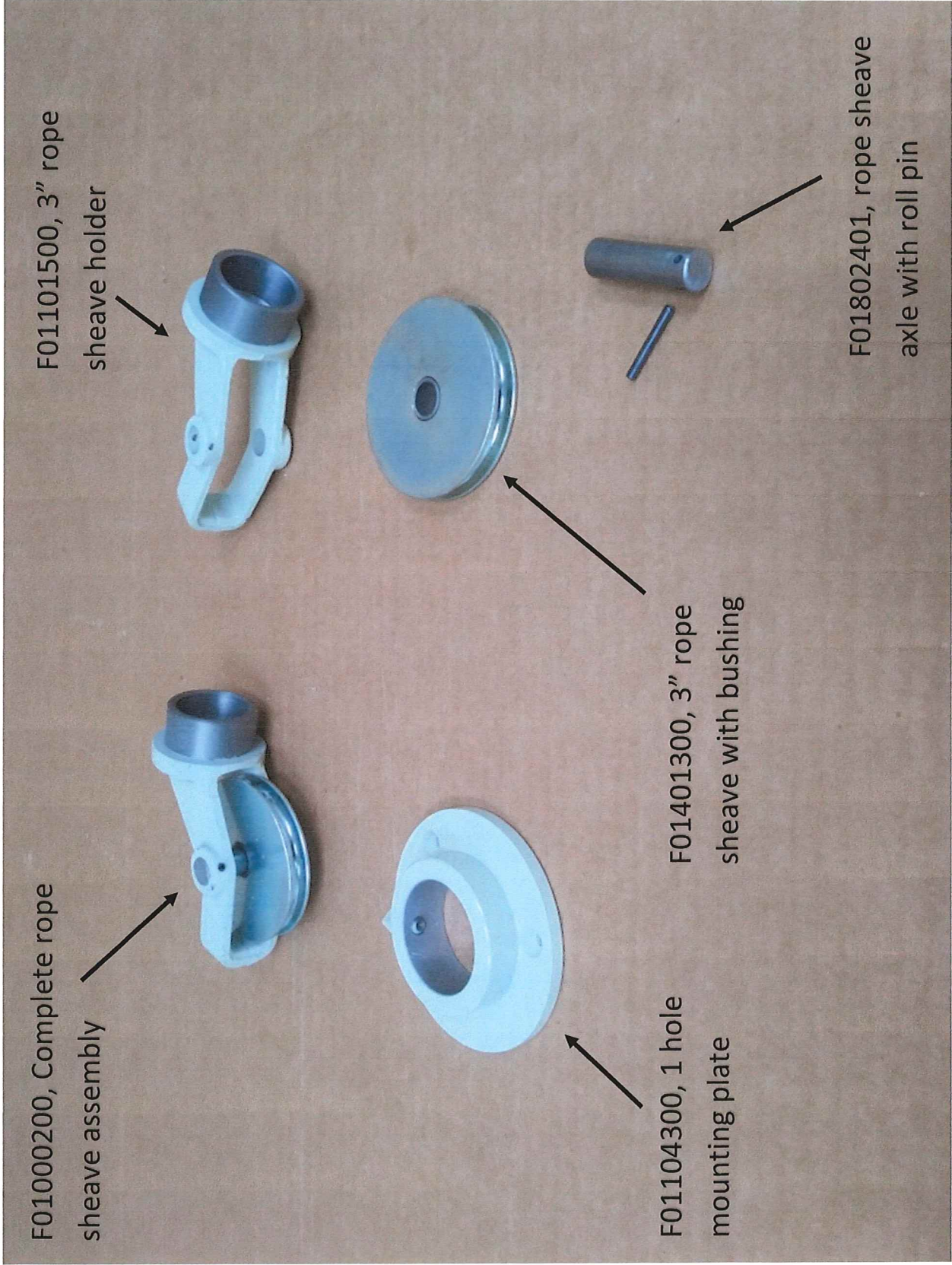
F01400700, belt tightener
sheave with bushing



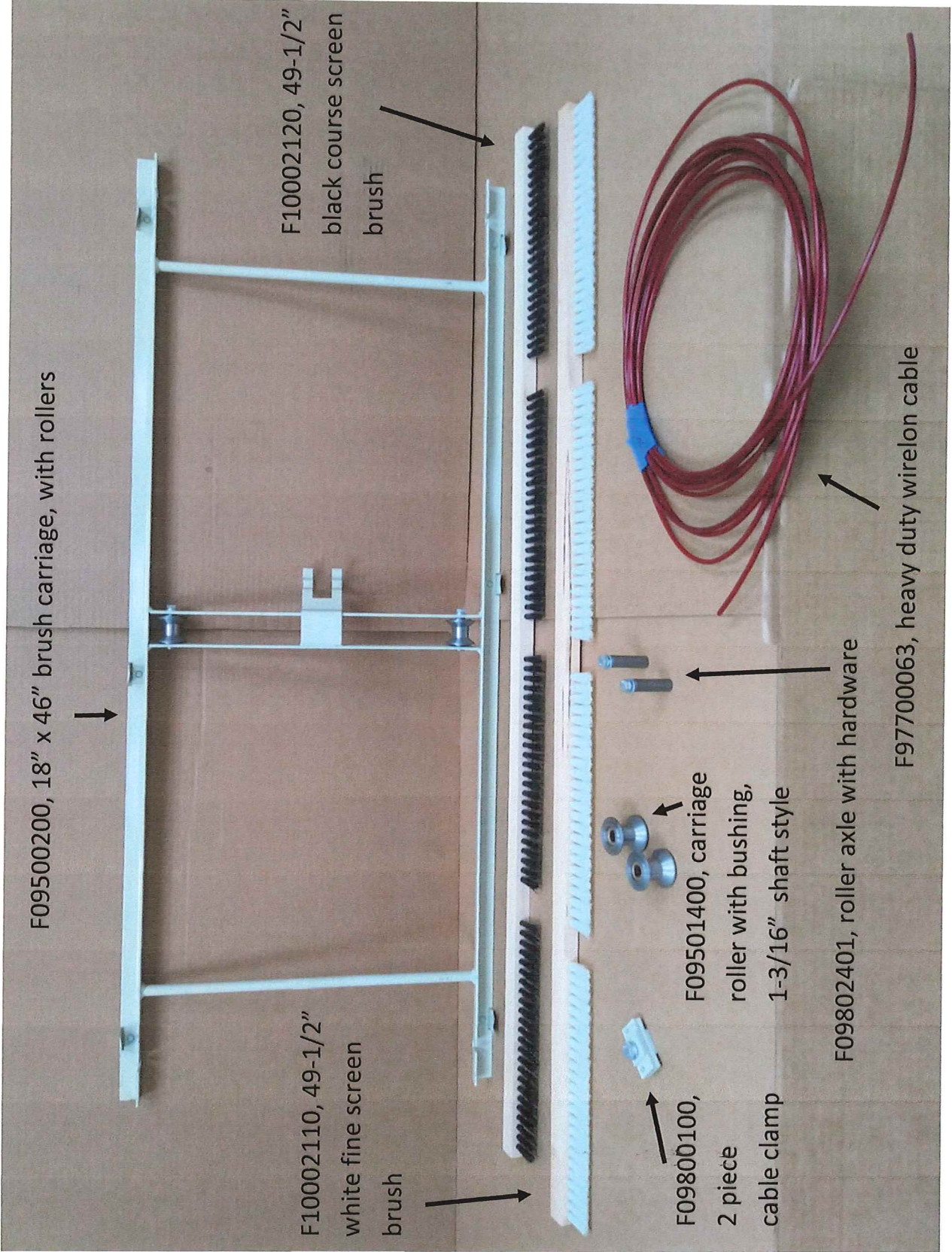
F01805010, belt tightener
axle with zerck



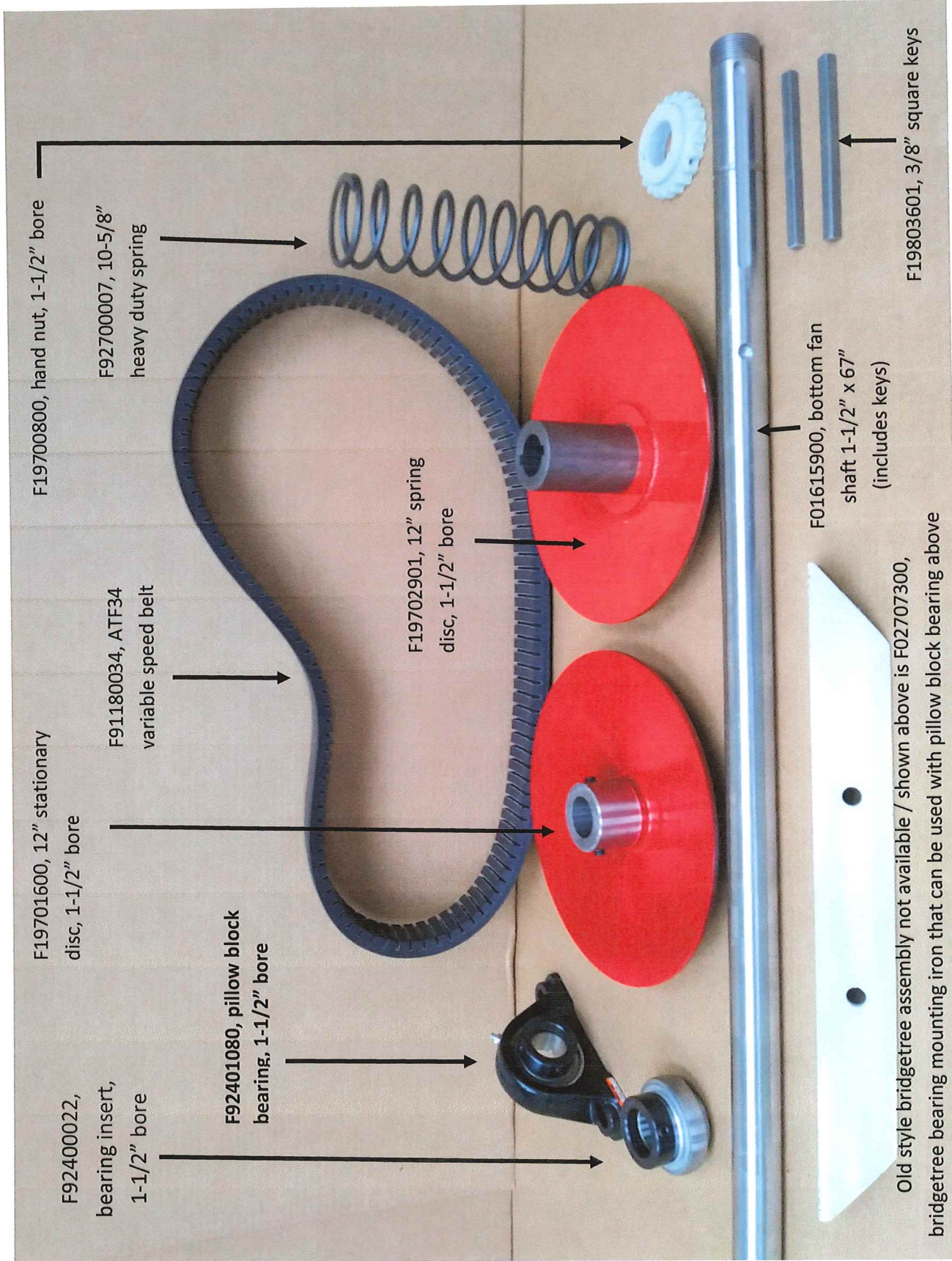
Belt tightener assembly



3" Rope sheave assembly



Brush carriage, with accessories, page 10



F19700800, hand nut, 1-1/2" bore

F92700007, 10-5/8" heavy duty spring

F19701600, 12" stationary disc, 1-1/2" bore

F91180034, ATF34 variable speed belt

F19702901, 12" spring disc, 1-1/2" bore

F92400022, bearing insert, 1-1/2" bore

F92401080, pillow block bearing, 1-1/2" bore

F01615900, bottom fan shaft 1-1/2" x 67" (includes keys)

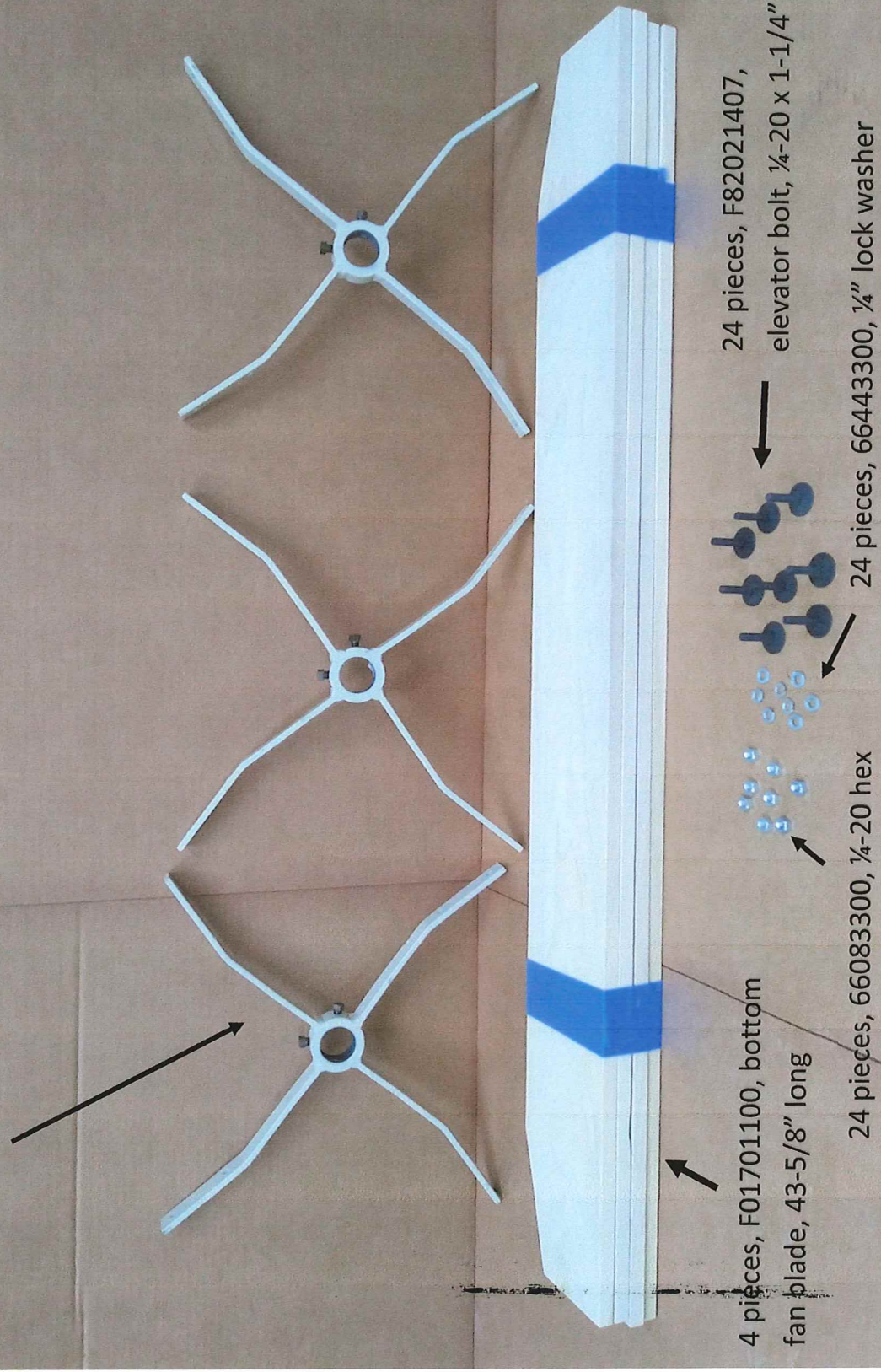
F19803601, 3/8" square keys

Old style bridgetree assembly not available / shown above is F02707300, bridgetree bearing mounting iron that can be used with pillow block bearing above

Bottom fan shaft assembly, page 11

3 pieces, F06001000, bottom fan spider, 1-1/2" bore

F06002681, complete bottom fan assembly



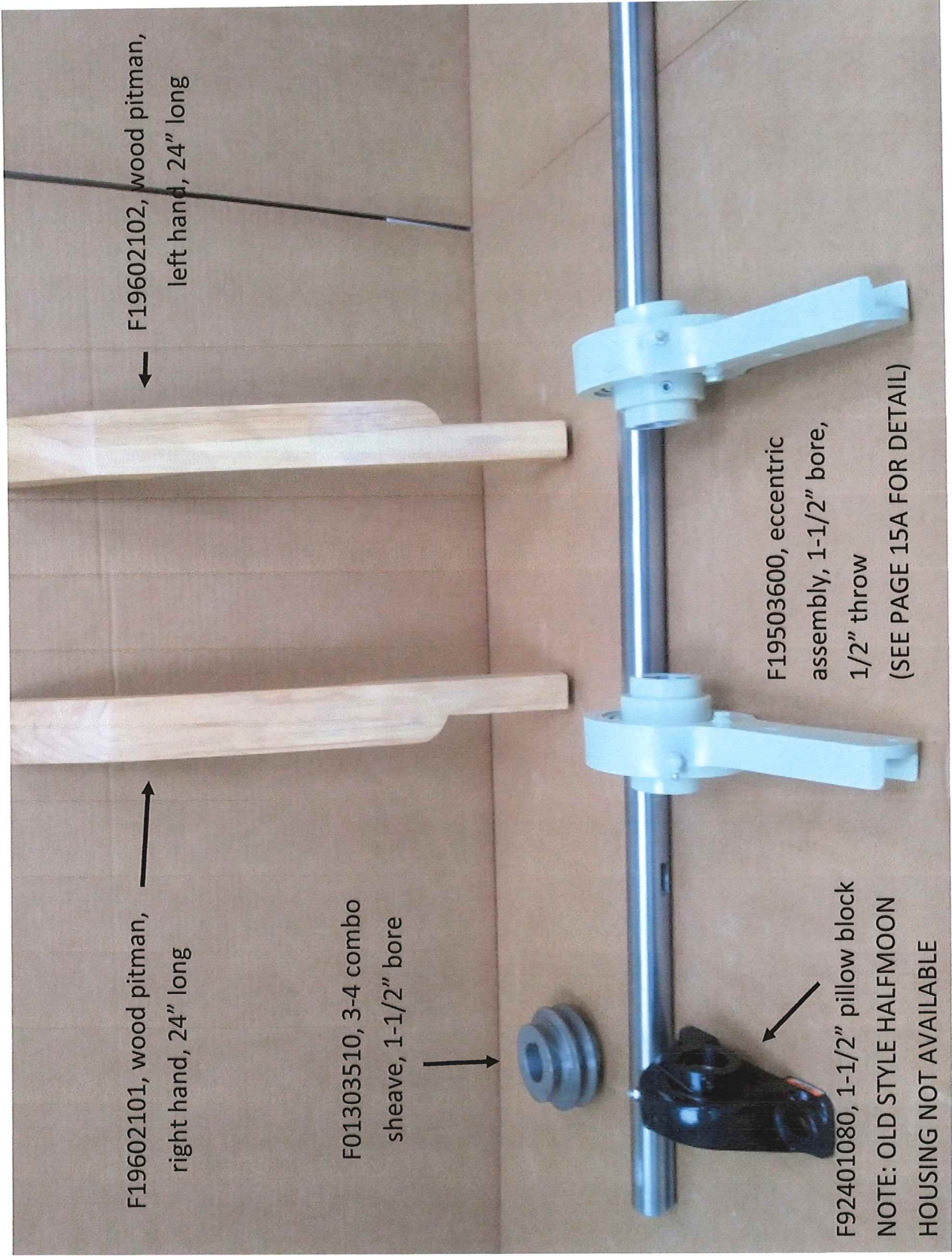
4 pieces, F01701100, bottom fan blade, 43-5/8" long

24 pieces, F82021407, elevator bolt, 1/4-20 x 1-1/4"

24 pieces, 66083300, 1/4-20 hex

24 pieces, 66443300, 1/4" lock washer

bottom fan assembly, 1-1/2" bore, 9 wide, page 12



F19602101, wood pitman, right hand, 24" long

F19602102, wood pitman, left hand, 24" long

F01303510, 3-4 combo sheave, 1-1/2" bore

F19503600, eccentric assembly, 1-1/2" bore, 1/2" throw (SEE PAGE 15A FOR DETAIL)

F92401080, 1-1/2" pillow block
NOTE: OLD STYLE HALFMOON HOUSING NOT AVAILABLE

Eccentric shaft, wood pitmans, page 15

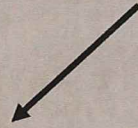
F19503600, Complete eccentric assembly, 1-1/2" bore, 1/2" throw



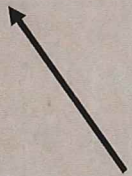
F19703000, Eccentric housing

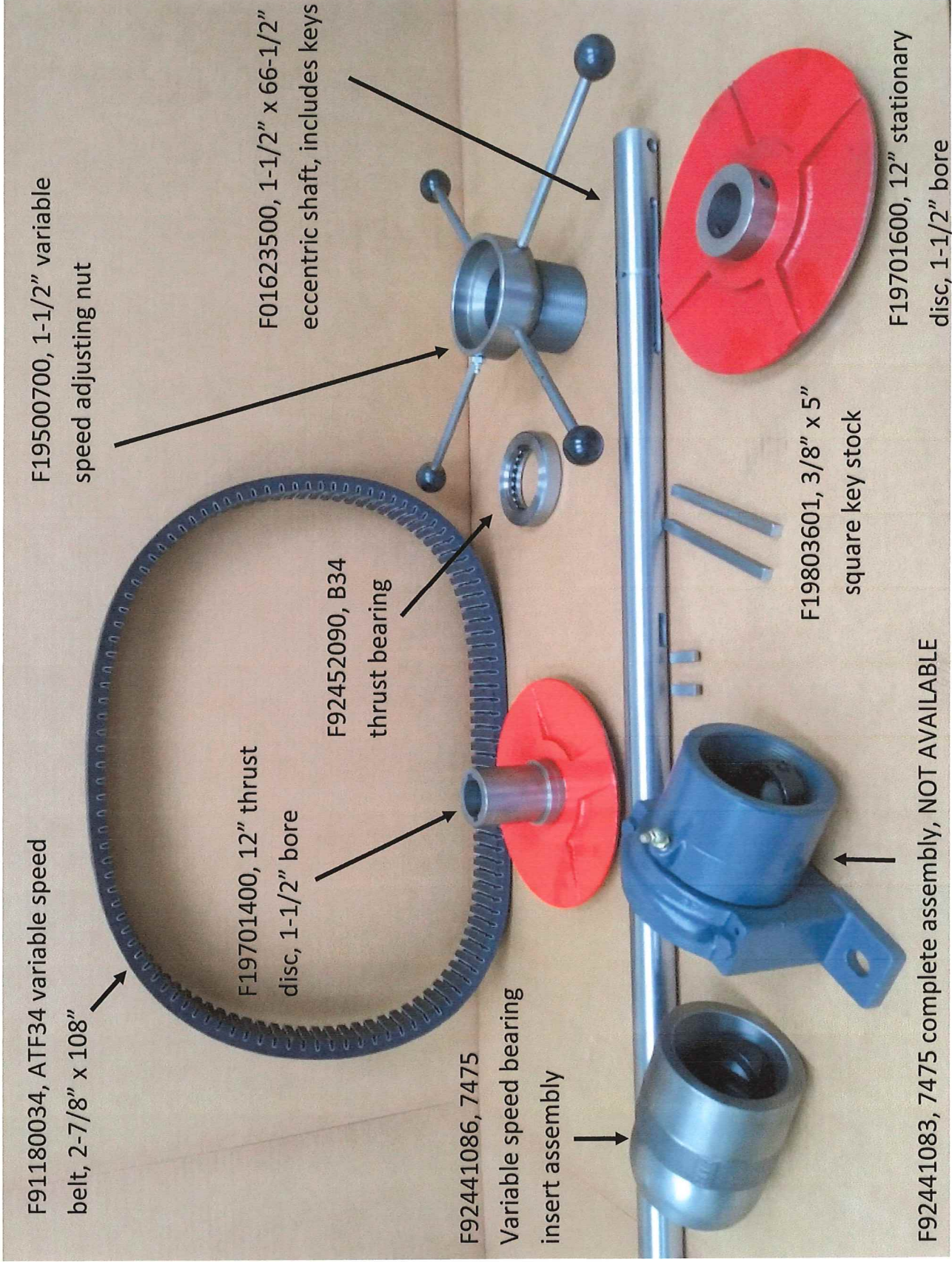


F19804004, Eccentric hub, 1-1/2" bore, 1/2" throw

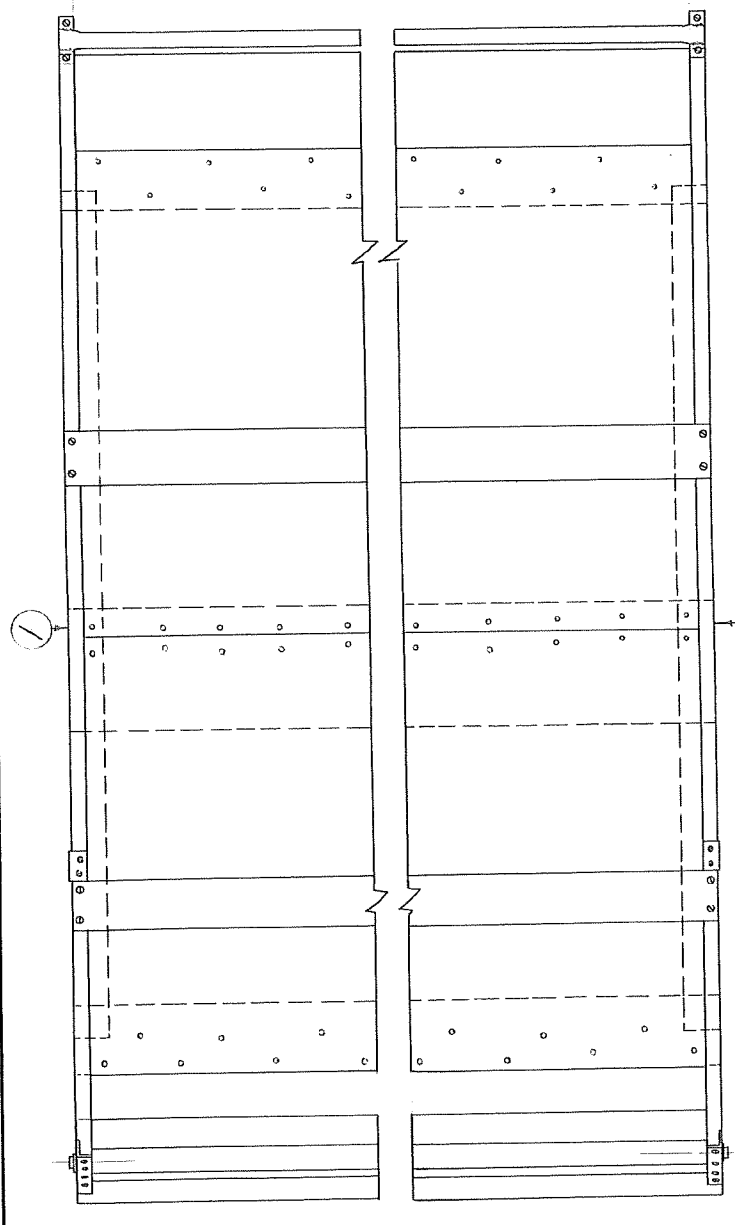


F92400053, Bearing insert

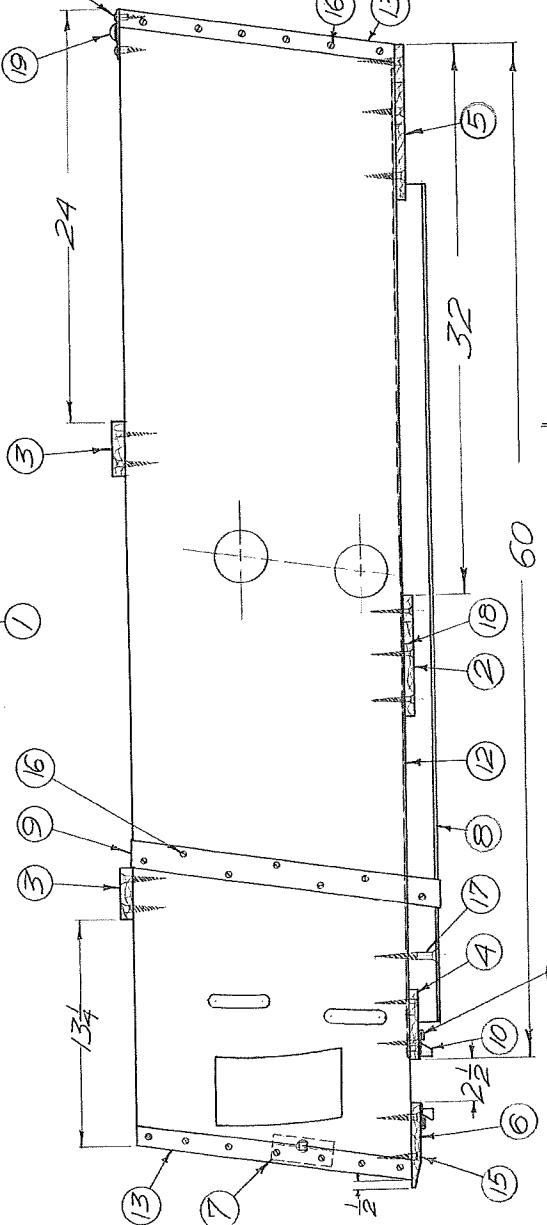




Eccentric shaft assembly, Super 49, page 16



MACH. NO.	QTY	DESCRIPTION	MATERIAL	REMARKS
19	1	PIPE GIRT ASSY	OAK L.H. #R.H.	
18	70	1/2" 14 NAILS		
17	12	2" 10 WOODSCREW	FLAT HD.	
16	36	5/8" 8 WOODSCREW	FLAT HD.	
15	30	1 1/2" 10 WOODSCREW	FLAT HD.	
14	4	3/4" 8 WOODSCREW	RD. HD.	
13	1	END IRON	STL.	
12	2	SHOE BOTTOM METAL SH. ST.		
11	2	SPROUT GUIDE	SH. ST.	
10	2	SPROUT TRACK	PINE	
9	2	SIDE BRACE	STL.	
8	2	SHOE RUNNER	OAK	
7	1	CROSS GIRT	PINE	
6	1	SHOE MENDING	PINE	
5	1	FRONT BOARD	PINE	
4	1	SPROUT BOARD	PINE	
3	2	TOP BOARD	PINE	
2	2	PITMAN	PINE	
1	2	SHOE SIDE	OAK L.H. #R.H.	



MACH. NO.	QTY	DESCRIPTION	MATERIAL	REMARKS
19	1	PIPE GIRT ASSY	OAK L.H. #R.H.	
18	60	1/2" 14 NAILS		
17	12	2" 10 WOODSCREW	FLAT HD.	
16	36	5/8" 8 WOODSCREW	FLAT HD.	
15	30	1 1/2" 10 WOODSCREW	FLAT HD.	
14	4	3/4" 8 WOODSCREW	RD. HD.	
13	4	END IRON	STL.	
12	2	SHOE BOTTOM METAL SH. ST.		
11	2	SPROUT GUIDE	SH. ST.	
10	2	SPROUT TRACK	PINE	
9	2	SIDE BRACE	STL.	
8	2	SHOE RUNNER	OAK	
7	1	CROSS GIRT	PINE	
6	1	SHOE MENDING	PINE	
5	1	FRONT BOARD	PINE	
4	1	SPROUT BOARD	PINE	
3	2	TOP BOARD	PINE	
2	2	PITMAN	PINE	
1	2	SHOE SIDE	OAK L.H. #R.H.	

NOTE FOR SHOES WITH ROCKERS INCLUDED USE:
 #9 WIDE
 L.H. - #30-061-4B
 R.H. - #30-061-5B
 #8 WIDE
 L.H. - #30-061-6B
 R.H. - #30-061-7B

#9 WIDE
 L.H. AS SHOWN - #30-061-B
 R.H. OPPOSITE - #30-061-1B
 #8 WIDE
 L.H. AS SHOWN - #30-061-2B
 R.H. OPPOSITE - #30-061-3B

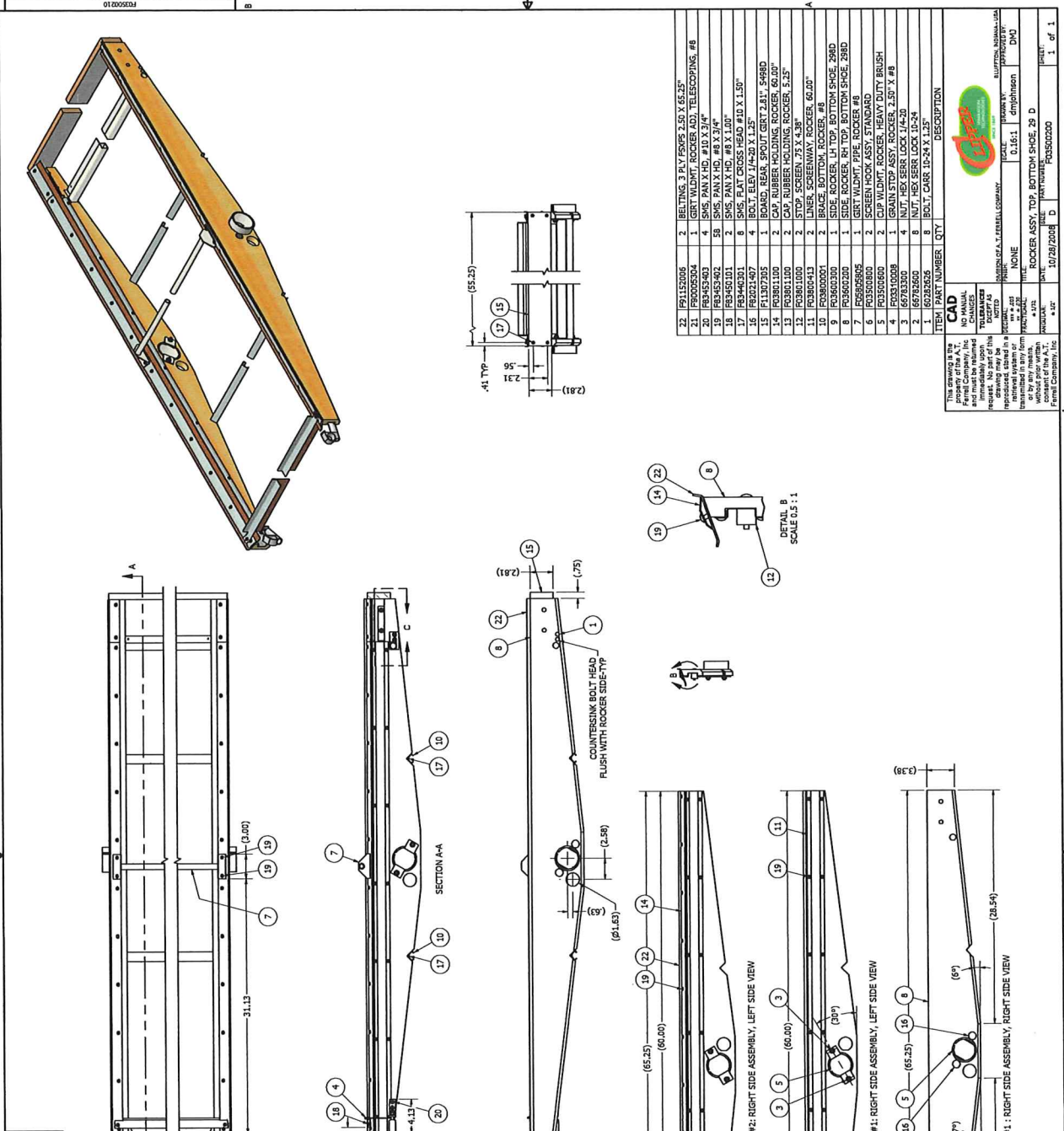
MICROFILMED

DATE	BY	SCALE	DRG. BY
9-23-57		1/2" = 1'-0"	
A. T. FERRELL & CO. 49-D BAGINAW, INCH.			
MACH. NO. 49-D			
SHEET NO. 30-061			

ASSEMBLED SHOE

Reference No. 33, Center Mainframe for Part 3300000000000000000

REV	DESCRIPTION	DATE	APPROVED
A	REWORK TO ADD WAS C SIZE	11/29/2012	dm/raahon
B	F5000500 WAS F5000500, ADD F11302905	12/15/2013	dm/raahon
C	F11302905 WAS F11302905, ADD F11302905	4/11/2013	dm/raahon
D	ROTATE ROCKER CUPS 30 DEG, ADD F3555580, 62282626 & 62782650 WAS F634542260	4/11/2013	dm/raahon

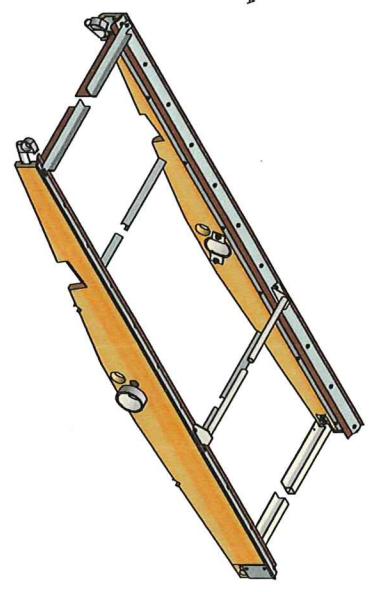
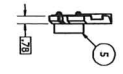
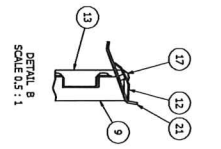
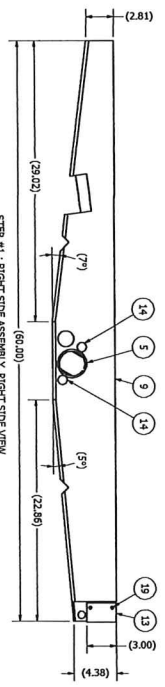
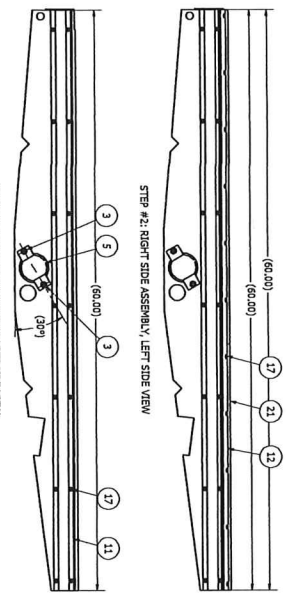
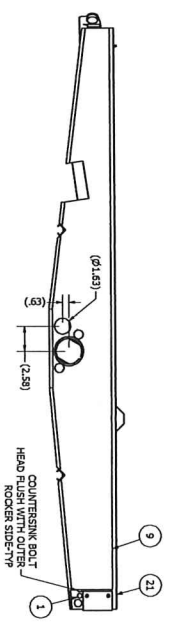
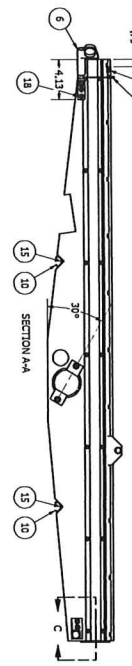
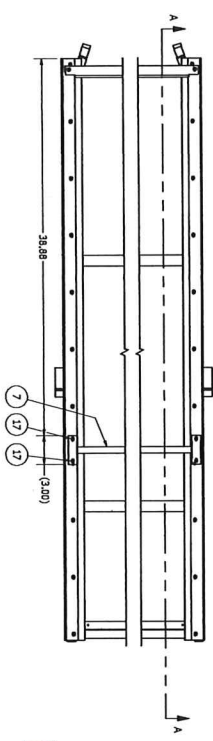
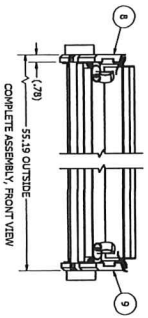
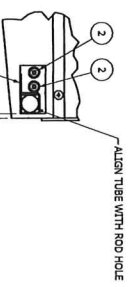


ITEM	PART NUMBER	QTY	DESCRIPTION
22	F61152006	2	BELTING, 3 PLY F50V5 2.50 X 66.25"
21	F60055004	1	GIRT WALDMIT, ROCKER ADJ, TELESCOPING, #8
20	F64452503	2	SNK, PAN X HD, #3 X 1.41"
19	F64452503	2	SNK, PAN X HD, #3 X 1.41"
18	F63450101	2	SNK, PAN X HD, #3 X 1.41"
17	F63440301	6	SNK, FLAT CROSS HEAD #10 X 1.50"
16	F62021407	4	BOLT, ELEV 1/4-20 X 1.25"
15	F11307205	1	BOARD, REAR, SPOUT GIRT 2.61, 5/8RD
14	F63861100	2	CAP, RUBBER HOLDING, ROCKER, 60.00"
13	F63861100	2	CAP, RUBBER HOLDING, ROCKER, 60.00"
12	F63861100	2	CAP, RUBBER HOLDING, ROCKER, 60.00"
11	F63861100	2	CAP, RUBBER HOLDING, ROCKER, 60.00"
10	R08600001	2	BRACE, BOTTOM, ROCKER, #8
9	F03660300	1	SIDE, ROCKER, LH TOP, BOTTOM SHOE, 28RD
8	F03660300	1	SIDE, ROCKER, RH TOP, BOTTOM SHOE, 28RD
7	F58565805	1	GIRT WALDMIT PIPE, ROCKER #8
6	F03500800	2	SCREEN HOOD ASSY, STANDARD
5	F03500800	2	SCREEN HOOD ASSY, STANDARD
4	66782600	2	INUT, HEX SERR LOCK 1/4-20
3	66782600	2	INUT, HEX SERR LOCK 1/4-20
2	66782600	2	INUT, HEX SERR LOCK 1/4-20
1	60282626	8	BOLT, CARR 1/2-24 X 1.25"

CAD
 This drawing was created using the CAD system of the P.A.T. (Fergal Company), Inc.
 No liability is assumed for errors or omissions.
 This drawing is the property of Fergal Company, Inc.
 It is to be used only for the project specified.
 It is to be used only for the project specified.
 It is to be used only for the project specified.
 It is to be used only for the project specified.

NOTES:
 1. DO NOT SCALE FROM DRAWING.
 2. ONE PIECE REQUIRED PER F11302905, SHOE ASSY, BOTTOM LH W/ROCKERS, 28RD.
 3. ONE PIECE REQUIRED PER F11302905, SHOE ASSY, BOTTOM RH W/ROCKERS, 28RD.
 4. ONE PIECE REQUIRED PER F11302905, SHOE ASSY, BOTTOM LH W/ROCKERS, 69A & D.
 5. ONE PIECE REQUIRED PER F11302905, SHOE ASSY, BOTTOM RH W/ROCKERS, 69A & D.

REV	BY	DATE	DESCRIPTION
1	XXXXXX	2/15/2012	REWORKING FOR NEW SCALE
2	XXXXXX	11/29/2012	ADDED DETAIL OF BRUSH HOLE (SIZE AND LOCATION)
3	XXXXXX	4/9/2013	IMPROVE



NOTES:
 1. DO NOT SCALE FROM DRAWING.
 2. ONE BRUSH REQUIRED PER ROLLER/IDB; SHOE ASSY, BOTTOM LH/RH W/ROCKERS, 288D.

ITEM	PART NUMBER	QTY	DESCRIPTION
21	F91152006	10.332	R BRETTS 3 PLY FIBERS 2.50 X 62.00"
20	F03005504	1	RIGHT WADWT ROCKER (20) TELESCOPING #8
19	F03005504	1	LEFT WADWT ROCKER (20) TELESCOPING #8
17	F03455402	4	SNS MAIN X HD #8 D X 3/4"
16	F03455402	4	SNS MAIN X HD #8 X 3/4"
15	F03440101	2	SNS FLAT CROSS HEAD #10 X 1.50"
14	F03021407	4	BOLT, ELEV 1/4-20 X 1.25"
13	F03089000	2	ANGLE SCREEN STOP ROCKER
12	F03089000	2	ANGLE SCREEN STOP ROCKER
11	F03089000	2	ANGLE SCREEN STOP ROCKER
10	F03089000	2	ANGLE SCREEN STOP ROCKER
9	F03089000	2	ANGLE SCREEN STOP ROCKER
8	F03089000	2	ANGLE SCREEN STOP ROCKER
7	F03089000	2	ANGLE SCREEN STOP ROCKER
6	F03089000	2	ANGLE SCREEN STOP ROCKER
5	F03089000	2	ANGLE SCREEN STOP ROCKER
4	F03089000	2	ANGLE SCREEN STOP ROCKER
3	F03089000	2	ANGLE SCREEN STOP ROCKER
2	F03089000	2	ANGLE SCREEN STOP ROCKER
1	F03089000	2	ANGLE SCREEN STOP ROCKER

THIS DRAWING IS THE PROPERTY OF FERRIS COMPANY, INC. IT IS TO BE USED ONLY FOR THE PROJECT AND QUANTITY SPECIFIED HEREON. IT IS TO BE RETURNED TO FERRIS COMPANY, INC. IMMEDIATELY UPON COMPLETION OF THE PROJECT. NO PART OF THIS DRAWING IS TO BE REPRODUCED OR TRANSMITTED IN ANY FORM OR BY ANY MEANS, ELECTRONIC OR MECHANICAL, INCLUDING PHOTOCOPYING, RECORDING, OR BY ANY INFORMATION STORAGE AND RETRIEVAL SYSTEM. WITHOUT THE WRITTEN PERMISSION OF FERRIS COMPANY, INC.

NO SCALE

DATE: 10/28/2010

PROJECT: ROCKER ASSY, BOTTOM, BOTTOM SHOE, 29 D

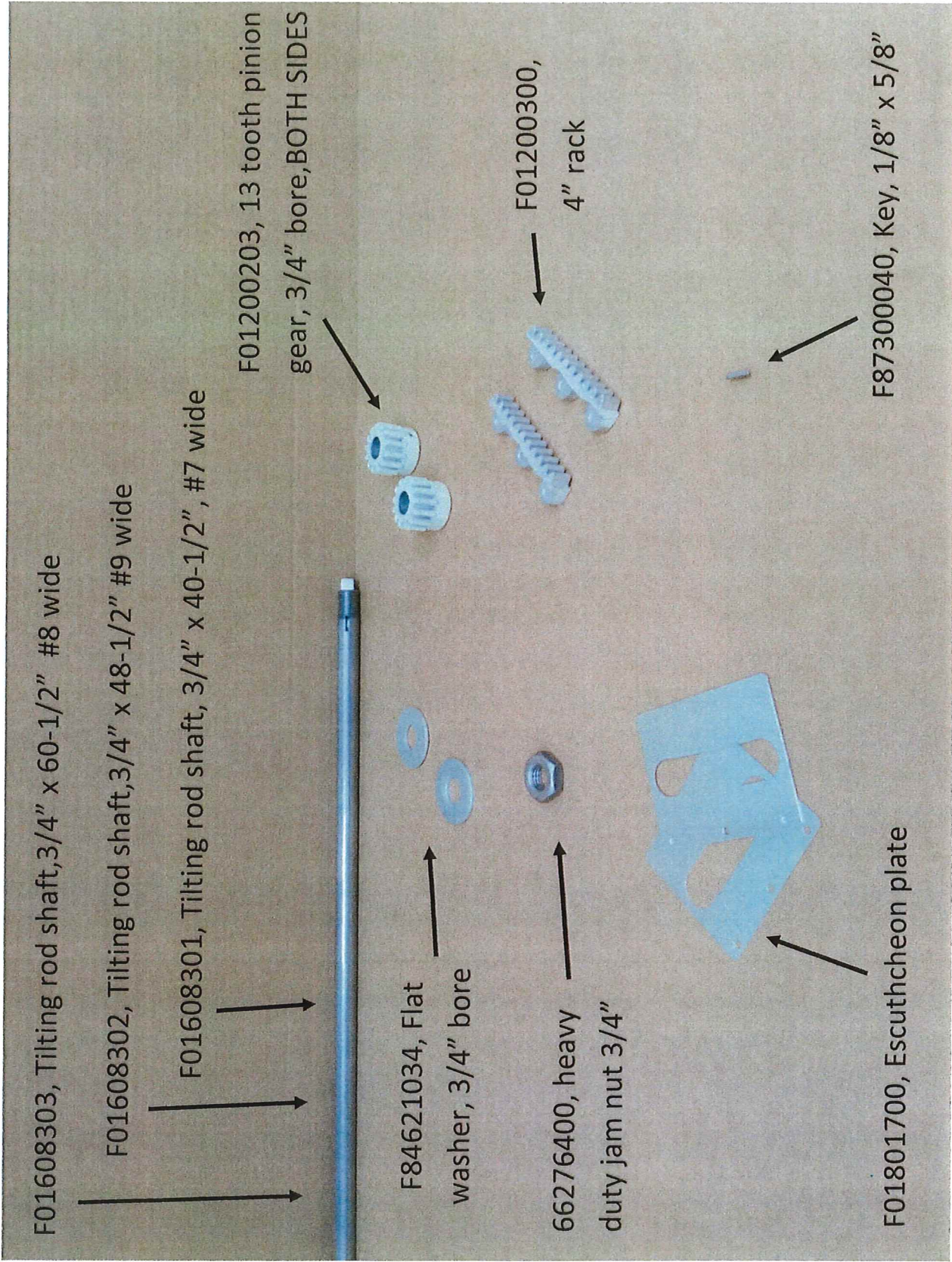
DESIGNER: [Signature]

CHECKED: [Signature]

DATE: 10/28/2010

SCALE: 1:1

1 of 1



F01608303, Tilting rod shaft, 3/4" x 60-1/2" #8 wide

F01608302, Tilting rod shaft, 3/4" x 48-1/2" #9 wide

F01608301, Tilting rod shaft, 3/4" x 40-1/2" #7 wide

F01200203, 13 tooth pinion gear, 3/4" bore, BOTH SIDES

F84621034, Flat washer, 3/4" bore

66276400, heavy duty jam nut 3/4"

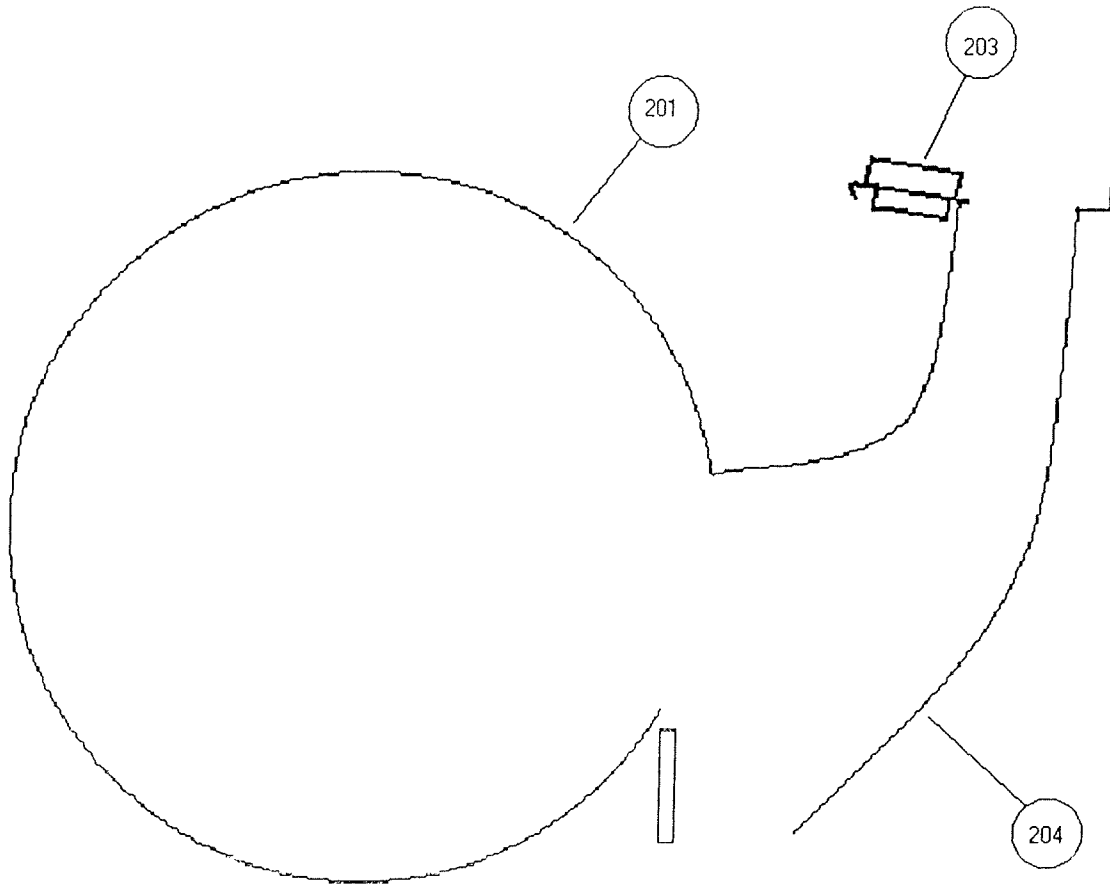
F01200300, 4" rack

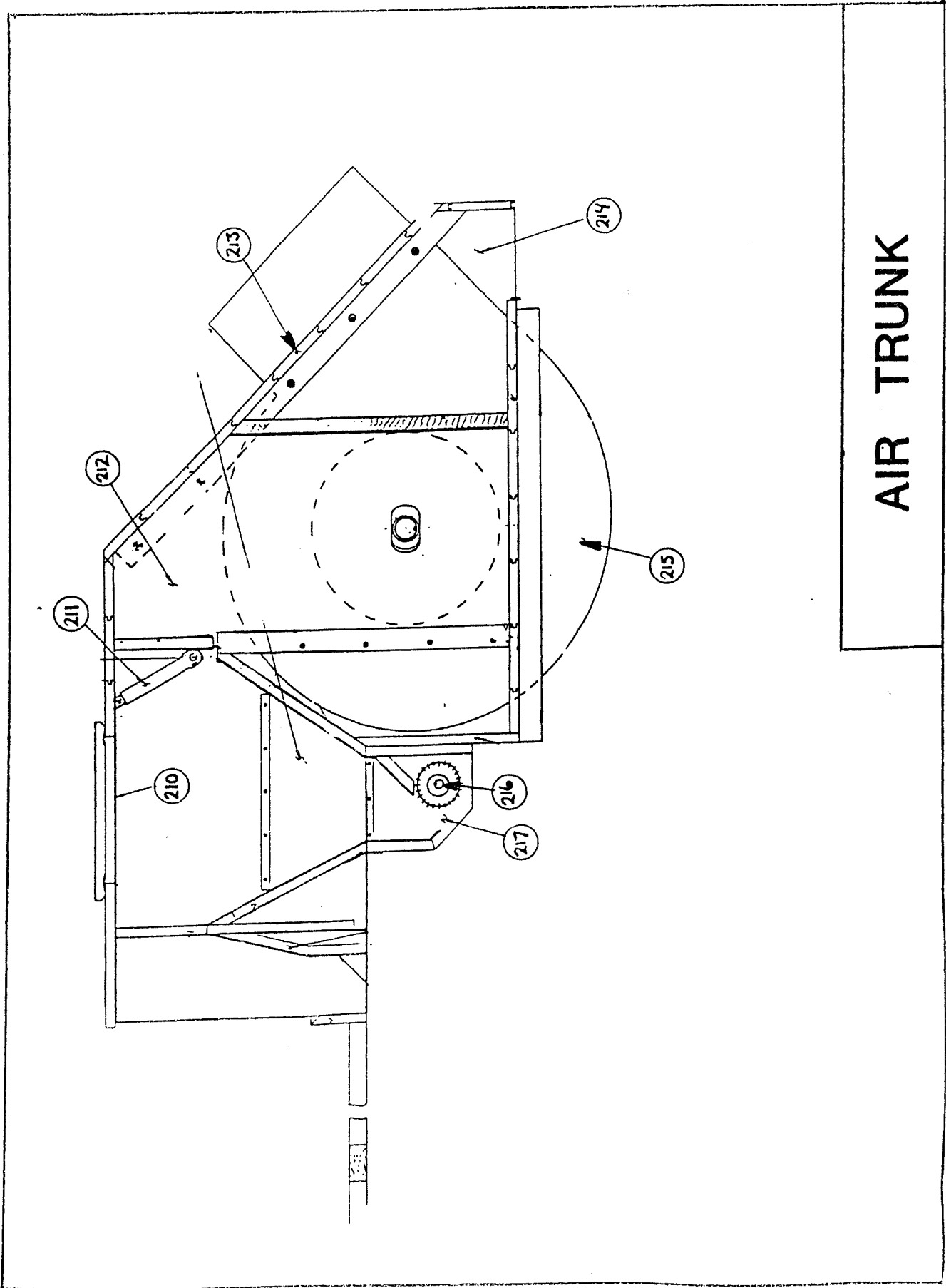
F01801700, Escutcheon plate

F87300040, Key, 1/8" x 5/8"

Screen rocker adjusting assembly

Bottom Fan Metal





AIR TRUNK